

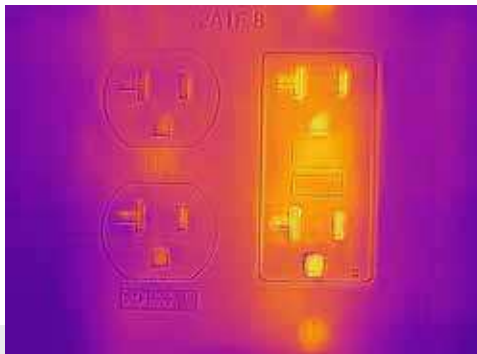
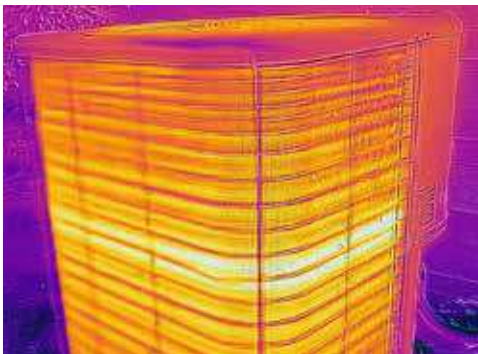


## CAMÉRAS THERMIQUES PROFESSIONNELLES POUR LES SMARTPHONES

### Série FLIR ONE® Pro

La FLIR ONE Pro et la FLIR ONE Pro LT vous donnent la capacité de détecter plus rapidement que jamais les problèmes invisibles. Avec des fonctionnalités évoluées les caméras FLIR ONE Pro sont aussi dures à la tâche que vous. Le traitement d'images révolutionnaire VividIR™ vous aide à voir plus de détails, la fonctionnalité FLIR MSX® ajoute de la netteté et des perspectives, tandis que le connecteur réglable FLIR OneFit™ est extensible jusqu'à 4 mm pour s'adapter à de nombreuses coques de protection du marché. Que vous inspectiez des tableaux électriques, recherchiez des problèmes sur les systèmes de chauffage ou constatiez des infiltrations d'eau, la FLIR ONE Pro et la FLIR ONE Pro LT sont des outils indispensables pour tout professionnel sérieux.

[www.flir.com/flironepro](http://www.flir.com/flironepro)



#### TRAITEMENT D'IMAGES VividIR™

Détectez les problèmes avec précision grâce à la puissance de traitement accrue de la série FLIR ONE Pro

- La technique unique de traitement d'images génère des images contenant jusqu'à quatre fois plus de pixels pour une précision de mesure thermique améliorée
- Améliore la résolution IR native de façon à produire des images thermiques nettes, riches en détails et faciles à interpréter
- Associée à la fonctionnalité MSX® laquelle améliore les images thermiques en leur ajoutant des détails visuels, la série FLIR ONE Pro offre une qualité d'image inégalée pour une solution IR mobile

#### MODÈLES PRO ET PRO LT

Obtenez d'excellents résultats avec la Pro LT ou passez à la FLIR ONE Pro pour obtenir une résolution supérieure et une sensibilité améliorée

- Choisissez la FLIR ONE Pro pour enregistrer des images IR nettes de 19 200 pixels pour une sensibilité thermique de 70 mK
- Enregistrez des images plus nettes qui offrent une précision de mesure thermique améliorée en augmentant le nombre de pixels sur la cible
- Mesurez les températures jusqu'à 400 °C (752 °F) avec la FLIR ONE Pro, contre 120 °C (248 °F) au maximum avec la Pro LT

#### DE L'ENDURANCE AU TRAVAIL

Les fonctionnalités avancées de travail vous permettent de résoudre les problèmes de façon plus professionnelle

- Définissez des points de mesure multiples et des zones d'intérêt pour les mesures simultanées
- Visualisez les angles et les espaces exigus en vous connectant à une Apple Watch ou une montre intelligente Android
- Obtenez des conseils en temps réel dans l'application FLIR ONE et créez des rapports professionnels grâce à l'application mobile FLIR Tools®

## CARACTÉRISTIQUES

Caractéristiques par produit	FLIR ONE Pro LT	FLIR ONE Pro
Dimension de pixel thermique	17 µm	12 µm
Résolution thermique	4 800 pixels (80 × 60)	19 200 pixels (160 × 120)
Sensibilité thermique	100 mK	70 mK
Plage de température de l'objet	-20 °C à 120 °C (-4 °F à 248 °F)	-20 °C à 400 °C (-4 °F à 752 °F)
Caractéristiques communes		
Certifications	MFi (version iOS), RoHS, CE/FCC, CEC-BC, EN62133	
Température de fonctionnement	0 °C à 35 °C (32 °F à 95 °F), chargement de la batterie de 0 °C à 30 °C (32 °F à 86 °F)	
Température hors fonctionnement	-20 °C à 60 °C (-4 °F à 140 °F)	
Dimensions (p x h x L)	68 × 34 × 14 mm (2,7 × 1,3 × 0,6 po)	
Poids (batterie incluse)	36,5 g	
Choc mécanique	Chute d'1,8 m (5,9 pieds)	
Données optiques		
Gamme spectrale	8 – 14 µm	
Résolution visuelle	1440 x 1080	
Champ de vision horizontal/vertical	50° ±1° / 43° ±1°	
Nombre d'images par seconde	8,7 Hz	
Mise au point	Fixe, 15 cm à l'infini	
Précision		
de mesure	±3 °C (±5,4 °F) ou ±5 %, différence typique en pourcentage entre la température ambiante et celle de la scène. Applicable 60 secondes après le démarrage lorsque l'unité est entre 15 °C et 35 °C (59 °F et 95 °F) et la scène entre 5 °C et 120 °C (41 °F et 248 °F).	
Correction liée à l'émissivité	Mat, semi-mat, semi-brillant, brillant	
Correction de la mesure	Émissivité ; température apparente réfléchie (22 °C / 72 °F)	

Les caractéristiques techniques peuvent être modifiées sans préavis. Pour obtenir les caractéristiques les plus à jour, rendez-vous sur [www.flir.com](http://www.flir.com)

Obturbateur	Automatique/Manuel
Alimentation	
Autonomie de la batterie	Environ 1 h
Durée de chargement de la batterie	40 min
Interfaces	
Vidéo	Lightning mâle (iOS), USB-C mâle (Android), Micro-USB (Android)
Chargement	USB-C femelle (5 V/1 A)
Application	
Modes de présentation des images	Infrarouge, visible, MSX, galerie
VividIR	Oui
Palettes	Gris (blanc chaud), couleurs chaudes, couleurs froides, Iron, Rainbow, Rainbow HC, Arctic, Lava et Wheel
Modes de capture	Vidéo, photo, mode accéléré
Affichage/capture des vidéos et des images fixes	Enregistrées au format 1440 × 1080
Formats de fichiers	Fichiers radiométriques JPEG, MPEG-4 (format de fichier MOV (iOS), MP4 (Android))
Point de mesure	Activation/désactivation ; Résolution 0,1 °C (0,1 °F)
Distance MSX réglable	0,3 m à l'infini
Indicateur visuel de batterie	0 à 100 %



**FLIR Portland**  
Corporate Headquarters  
Flir Systems, Inc.  
27700 SW Parkway Ave.  
Wilsonville, OR 97070  
USA  
PH: +1 886.477.3687

**FLIR Commercial Systems**  
Luxemburgstraat 2  
2321 Meer  
Belgium  
Tel. : +32 (0) 3665 5100  
Fax : +32 (0) 3303 5624  
E-mail : [flir@flir.com](mailto:flir@flir.com)

**FLIR Systems France**  
40 Avenue de Lingenfeld  
77200 Torcy  
France  
Tel. : +33 (0)1 60 37 55 02  
Fax : +33 (0)1 64 11 37 55  
E-mail : [flir@flir.com](mailto:flir@flir.com)

[www.flir.com](http://www.flir.com)  
NASDAQ: FLIR

L'équipement décrit dans le présent document est soumis aux réglementations régissant les exportations aux États-Unis ; une licence peut s'avérer nécessaire avant son exportation. Un détournement de l'utilisation contraire à la législation nord-américaine est interdit. Les images ne sont fournies qu'à des fins d'illustration. Les caractéristiques techniques peuvent être modifiées sans préavis. ©2018 FLIR Systems, Inc. Tous droits réservés. 06/18

18-1165-INS\_EMEA

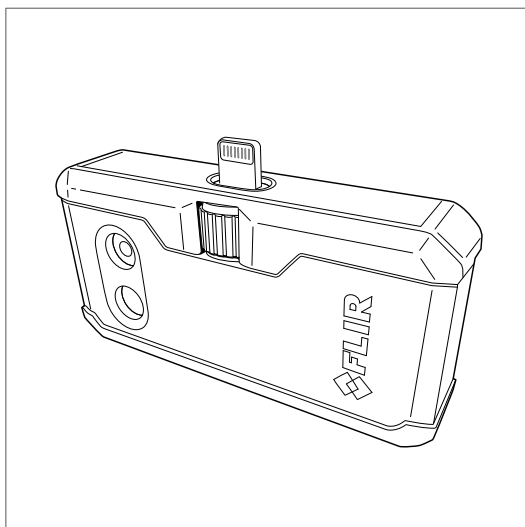


The World's Sixth Sense®



---

# Getting started FLIR ONE series







**Important note**

Before operating the device, you must read, understand, and follow all instructions, warnings, cautions, and legal disclaimers.

**Důležitost poznámka**

Před použitím zařízení si přečtěte veškeré pokyny, upozornění, varování a vyvážení se ze záruky, ujistěte se, že jim rozumíte, a řiďte se jimi.

**Viktig meddelelse**

Før du betjener enheden, skal du læse, forstå og følge alle anvisninger, advarsler, sikkerhedsforanstaltninger og ansvarsfraskrivelser.

**Wichtiger Hinweis**

Bevor Sie das Gerät in Betrieb nehmen, lesen, verstehen und befolgen Sie unbedingt alle Anweisungen, Warnungen, Vorsichtshinweise und Haftungsausschlüsse

**Σημαντική σημείωση**

Πριν από τη λειτουργία της συσκευής, πρέπει να διαβάσετε, να κατανοήσετε και να ακολουθήσετε όλες τις οδηγίες, προειδοποιήσεις, προφυλάξεις και νομικές αποποιήσεις.

**Nota importante**

Antes de usar el dispositivo, debe leer, comprender y seguir toda la información sobre instrucciones, advertencias, precauciones y renuncias de responsabilidad.

**Tärkeä huomautus**

Ennen laitteen käyttämistä on luettava ja ymmärrettävä kaikki ohjeet, vakavat varoitukset, varoitukset ja lakitiedotteet sekä noudatettava niitä.

**Remarque importante**

Avant d'utiliser l'appareil, vous devez lire, comprendre et suivre l'ensemble des instructions, avertissements, mises en garde et clauses légales de non-responsabilité.

**Fontos megjegyzés**

Az eszköz használatá előtt figyelmesen olvassa el és tartsa be az összes utasítást, figyelmeztetést, óvintézkedést és jogi nyilatkozatot.

**Nota importante**

Prima di utilizzare il dispositivo, è importante leggere, capire e seguire tutte le istruzioni, avvertenze, precauzioni ed esclusioni di responsabilità legali.

**重要な注意**

デバイスをご使用になる前に、あらゆる指示、警告、注意事項、および免責条項をお読み頂き、その内容を理解して従ってください。

**중요한 참고 사항**

장치를 작동하기 전에 반드시 다음의 사용 설명서와 경고, 주의사항, 법적 책임제한을 읽고 이해하며 따라야 합니다.

**Viktig**

Før du bruker enheten, må du lese, forstå og følge instruksjoner, advarsler og informasjon om ansvarsfraskrivelse.

**Belangrijke opmerking**

Zorg ervoor dat u, voordat u het apparaat gaat gebruiken, alle instructies, waarschuwingen en juridische informatie hebt doorgelezen en begrepen, en dat u deze opvolgt en in acht neemt.

**Ważna uwaga**

Przed rozpoczęciem korzystania z urządzenia należy koniecznie zapoznać się z wszystkimi instrukcjami, ostrzeżeniami, przestrogam i uwagami prawnymi. Należy zawsze postępować zgodnie z zaleceniami tam zawartymi.

**Nota importante**

Antes de utilizar o dispositivo, deverá proceder à leitura e compreensão de todos os avisos, precauções, instruções e isenções de responsabilidade legal e assegurar-se do seu cumprimento.

**Важное примечание**

До того, как пользоваться устройством, вам необходимо прочитать и понять все предупреждения, предостережения и юридические ограничения ответственности и следовать им.

**Viktig information**

Innan du använder enheten måste du läsa, förstå och följa alla anvisningar, varningar, försiktighetsåtgärder och ansvarsfriskrivningar.

**Önemli not**

Cihazı çalıştırmadan önce tüm talimatları, uyarıları, ikazları ve yasal açıklamaları okumalı, anlamalı ve bunlara uymalısınız.

**重要注意事項**

在操作设备之前，您必須閱讀、理解並遵循所有說明、警告、注意事項和法律免責聲明。

**重要注意事項**

操作裝置之前，您務必閱讀、了解並遵循所有說明、警告、注意事項與法律免責聲明。



## Getting started FLIR ONE series







# Table of contents

---

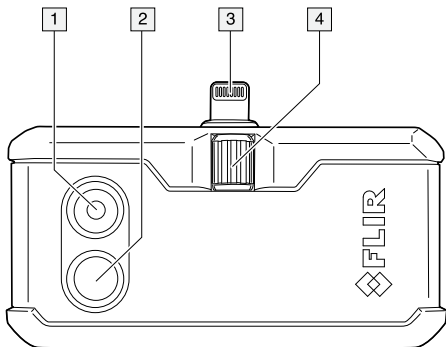
1	Illustrations .....	1
2	EN-US English .....	2
3	DE-DE Deutsch .....	5
4	ES-ES Español.....	8
5	FR-FR Français .....	11
6	IT-IT Italiano .....	14
7	JA-JP 日本語.....	17
8	KO-KR 한국어.....	20
9	NL-NL Nederlands.....	23
10	PT-PT Português.....	26
11	RU-RU Русский.....	29
12	ZH-CN 简体中文 .....	32



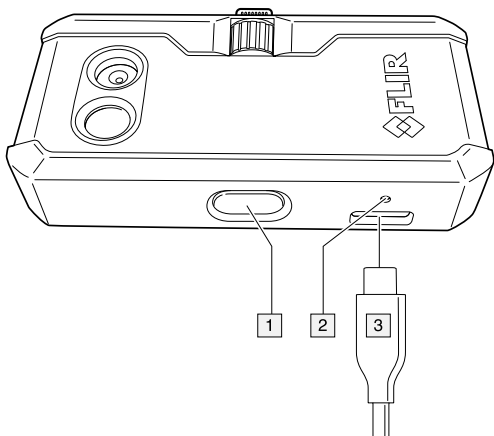
# 1 Illustrations

---

**Note** Explanations of the illustrations are provided in each language section.



**Figure 1.1** View from the front



**Figure 1.2** View from the bottom

## 2 EN-US English

---

### 2.1 Thank you!

Thank you for choosing a product from FLIR Systems. We hope that the product will meet your expectations and that you will consider us again for your future needs.

### 2.2 List of contents

- Infrared camera.
- Pouch.
- USB cable.

**Note** FLIR Systems reserves the right to discontinue models, parts or accessories, and other items, or to change specifications at any time without prior notice.

### 2.3 View from the front

See Figure 1.1 *View from the front*, page 1.

1. Visual camera.
2. Thermal camera.
3. Phone connector.
4. OneFit height control.

### 2.4 View from the bottom

See Figure 1.2 *View from the bottom*, page 1.

1. On/off switch and Power indicator.
2. Charge indicator LED.
3. USB-C power connector.

### 2.5 Quick start guide

1. Charge the FLIR ONE camera for approximately 1 hour.
2. Download and install the FLIR ONE app on your phone. The app is available on the Apple App Store and the Google Play Store.
3. Push the On/off button on the bottom of the FLIR ONE camera to turn it on. The indicator will flash green when the FLIR ONE camera is ready.
4. Connect the FLIR ONE camera to your phone. If needed, adjust the blue dial of the OneFit and extend the connector to the appropriate length to fit your phone's protective case.

## 2 EN-US English

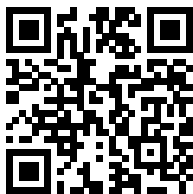
---

5. Start the FLIR ONE app on your phone. You will be asked to create a user account with your e-mail address and a password.
6. At the bottom of the screen and on the black bar, swipe to select Photo mode.
7. At the bottom of the screen, tap the round white button to take a snapshot. The image is saved to the Gallery.
8. The camera automatically goes into sleep mode after 2 minutes of inactivity.
9. Push and hold the On/off button for more than 2 seconds to turn off the FLIR ONE camera.

### 2.6 Read the manual before use

Go to the following website to read or download the manual:

<http://support.flir.com/resources/6ygz>



### 2.7 Extend your product warranty

Register your product to get:

- 2 years camera warranty.
- 10 years detector warranty.

Go to the following website to activate your extended warranty:

<http://support.flir.com/camreg>

**Note** Registration must be completed within 60 days of purchase.

### 2.8 Download FLIR Tools

FLIR Tools is a software suite designed to provide an easy way to update your camera and create inspection reports. Easily import, analyze, and edit images, and then include them in documents to share findings and justify repairs.

Go to the following website to download FLIR Tools:

<http://support.flir.com/tools>

### 2.9 Enhance your FLIR camera with tailored apps

Through FLIR-compatible apps you open the door to new kinds of thermal solutions tailored to your specific needs. FLIR thermal cameras support a wide ecosystem of applications developed by FLIR and its software partners.

One such solution is FLIR InSite, which streamlines your thermal inspection workflow.

Go to the following website to learn more about FLIR InSite:

<http://flir.com/insite>

### 2.10 Customer support

Do not hesitate to contact our Customer Support Center at <http://support.flir.com> if you experience problems or have any questions about your product.

## 3 DE-DE Deutsch

---

### 3.1 Vielen Dank!

Vielen Dank, dass Sie sich für ein Produkt von FLIR Systems entschieden haben. Wir hoffen, dass die Kamera Ihren Erwartungen voll und ganz entspricht und Sie sich bei Bedarf an weiteren Produkten erneut an uns wenden.

### 3.2 Inhalt

- Infrarotkamera.
- Tasche.
- USB-Kabel.

**Hinweis** FLIR Systems behält sich das Recht vor, die Herstellung von Modellen, Teilen, Zubehör und anderen Artikeln ohne vorherige Ankündigung einzustellen oder deren Spezifikationen zu ändern.

### 3.3 Ansicht von vorn

Siehe Figure 1.1 *View from the front*, Seite 1.

1. Tageslichtkamera.
2. Wärmebildkamera.
3. Telefon-Steckverbinder.
4. Höheneinstellung OneFit.

### 3.4 Ansicht von unten

Siehe Figure 1.2 *View from the bottom*, Seite 1.

1. Ein/Aus-Schalter und Netzanzeige.
2. Ladestand-LED-Anzeige.
3. USB-C-Netzanschluss.

### 3.5 Schnelleinstieg

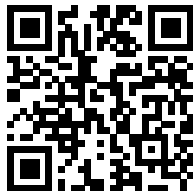
1. Laden Sie die FLIR ONE Kamera ca. 1 Stunde lang auf.
2. Laden Sie die FLIR ONE App auf Ihr Telefon herunter und installieren Sie sie. Die App ist im Apple App Store und im Google Play Store erhältlich.
3. Drücken Sie die Ein/Aus-Taste an der Unterseite der FLIR ONE Kamera, um sie einzuschalten. Die Anzeige blinkt grün, wenn die FLIR ONE Kamera bereit ist.

4. Schließen Sie die FLIR ONE Kamera an Ihr Telefon an. Passen Sie bei Bedarf das blaue Rädchen der OneFit-Funktion an, um den Steckverbinder auf die passende Länge für die Schutzhülle Ihres Telefons einzustellen.
5. Starten Sie auf Ihrem Telefon die FLIR ONE App. Sie werden aufgefordert, ein Benutzerkonto mit Ihrer E-Mail-Adresse und einem Kennwort zu erstellen.
6. Wischen Sie unten auf dem Bildschirm über den schwarzen Balken, um den Fotomodus auszuwählen.
7. Tippen Sie unten auf dem Bildschirm auf die kreisförmige weiße Taste, um ein Einzelbild aufzunehmen. Das Bild wird in der Galerie gespeichert.
8. Nach zwei Minuten Inaktivität wechselt die Kamera automatisch in den Energiesparmodus.
9. Halten Sie die Ein/Aus-Taste länger als 2 Sekunden gedrückt, um die FLIR ONE Kamera auszuschalten.

#### 3.6 Lesen Sie vor Gebrauch zunächst die Anleitung

Besuchen Sie die folgende Website, um das Benutzerhandbuch zu lesen bzw. herunterzuladen:

<http://support.flir.com/resources/6ygz>



#### 3.7 Verlängern Sie die Garantie Ihres Produkts

Registrieren Sie Ihr Produkt, und Sie erhalten:

- 2 Jahre Garantie auf die Kamera.
- 10 Jahre Garantie auf den Detektor.

Besuchen Sie die folgende Website, um Ihre verlängerte Garantie zu aktivieren:

<http://support.flir.com/camreg>

**Hinweis** Die Registrierung muss innerhalb von 60 Tagen nach Kauf abgeschlossen werden.

#### 3.8 FLIR Tools herunterladen

FLIR Tools ist eine Software-Suite, die es Ihnen ermöglicht, Ihre Kamera einfach zu aktualisieren und Untersuchungsberichte zu erstellen. Sie können Ihre Bilder



einfach importieren, analysieren und bearbeiten. Anschließend können Sie diese in Dokumente einfügen, um die Ergebnisse zu teilen und den Reparaturbedarf zu belegen.

Besuchen Sie die folgende Website, um FLIR Tools herunterzuladen:

<http://support.flir.com/tools>

#### **3.9 Erweitern Sie den Funktionsumfang Ihrer FLIR Kamera mit speziellen Apps.**

Mit den mit FLIR kompatiblen Apps stehen Ihnen völlig neue Wärmebildlösungen für Ihre spezifischen Anforderungen zur Verfügung. Die FLIR Wärmebildkameras unterstützen ein umfassendes Ökosystem an Anwendungen, die von FLIR und seinen Software-Partnern entwickelt wurden.

Eine dieser Lösungen ist FLIR InSite, das Ihnen hilft, den Workflow Ihrer thermografischen Untersuchungen effizienter zu gestalten.

Besuchen Sie die folgende Website, um mehr über FLIR InSite zu erfahren:

<http://flir.com/insite>

#### **3.10 Kundendienst**

Wenn Probleme auftreten oder Sie Fragen zu unserem Produkt haben, wenden Sie sich an unser Customer Support Center unter <http://support.flir.com>.

## 4 ES-ES Español

---

### 4.1 Gracias.

Gracias por escoger un producto FLIR Systems. Esperamos que cumpla sus expectativas y nos vuelva a considerar para compras futuras.

### 4.2 Contenido

- Cámara de infrarrojos.
- Funda.
- Cable USB.

**Nota** FLIR Systems se reserva el derecho a dejar de fabricar modelos, piezas y accesorios, así como otros elementos, o a cambiar las especificaciones en cualquier momento sin previo aviso.

### 4.3 Vista desde la parte delantera

Consulte Figure 1.1 *View from the front*, página 1.

1. Cámara visual.
2. Cámara térmica.
3. Conexión para el teléfono.
4. Control de altura OneFit.

### 4.4 Vista desde la parte inferior

Consulte Figure 1.2 *View from the bottom*, página 1.

1. Interruptor de encendido/apagado e indicador de alimentación.
2. Indicador LED de carga.
3. Conector de alimentación USB-C.

### 4.5 Guía de inicio rápido

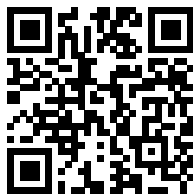
1. Cargue la cámara FLIR ONE durante aproximadamente 1 hora.
2. Descargue e instale la aplicación FLIR ONE en el teléfono. Esta aplicación está disponible en la App Store de Apple y en Google Play Store.
3. Pulse el botón de encendido/apagado en la parte inferior de la cámara FLIR ONE para encenderla. El indicador parpadeará en verde cuando la cámara FLIR ONE esté lista.
4. Conecte la cámara FLIR ONE al teléfono. Si es necesario, ajuste el dial azul de OneFit y extienda el conector hasta la longitud adecuada para que encaje con la funda protectora de su teléfono.

5. Inicie la aplicación FLIR ONE en el teléfono. Se le pedirá que cree una cuenta de usuario con su dirección de correo electrónico y una contraseña.
6. En la barra negra de la parte inferior de la pantalla, deslice para seleccionar el modo de fotografía.
7. Toque el botón blanco redondo de la parte inferior de la pantalla para guardar una instantánea. La imagen se guarda en la Galería.
8. La cámara pasará automáticamente al modo de suspensión tras 2 minutos de inactividad.
9. Mantenga pulsado el botón de encendido/apagado durante más de 2 segundos para apagar la cámara FLIR ONE.

### 4.6 Lea el manual antes de usar el producto

Visite el siguiente sitio web para leer o descargar el manual:

<http://support.flir.com/resources/6ygz>



### 4.7 Amplíe la garantía de sus productos

Registre su producto y obtendrá:

- 2 años de garantía en cámaras.
- 10 años de garantía en detectores.

Visite el siguiente sitio web para activar su garantía ampliada:

<http://support.flir.com/camreg>

**Nota** El registro debe completarse dentro de los primeros 60 días de la compra.

### 4.8 Descargue FLIR Tools

FLIR Tools es una suite de software diseñada para proporcionar un método sencillo para actualizar la cámara y crear informes de inspecciones. Importe, analice y edite las imágenes con facilidad y, a continuación, inclúyalas en documentos para compartir la información y justificar las reparaciones necesarias.

Visite el siguiente sitio web para descargar FLIR Tools:

<http://support.flir.com/tools>

### **4.9 Mejore su cámara FLIR con aplicaciones personalizadas**

Las aplicaciones compatibles con FLIR le abren la puerta a nuevos tipos de soluciones térmicas adaptadas a sus necesidades específicas. Las cámaras térmicas FLIR son compatibles con una amplio ecosistema de aplicaciones desarrollado por FLIR y sus socios de software.

Una solución así es FLIR InSite, que optimiza el flujo de trabajo de las inspecciones térmicas.

Visite el siguiente sitio web para obtener más información acerca de FLIR InSite:

<http://flir.com/inSITE>

### **4.10 Atención al cliente**

No dude en ponerse en contacto con nuestro centro de soporte técnico en <http://support.flir.com> si tiene problemas o alguna pregunta referente a su producto.

## 5 FR-FR Français

---

### 5.1 Merci !

Merci d'avoir choisi un produit FLIR Systems. Nous espérons que ce produit vous apportera entière satisfaction et que vous choisirez à nouveau notre marque lors de vos prochains achats.

### 5.2 Liste des pièces fournies

- Caméra infrarouge.
- Housse.
- Câble USB.

**Remarque** FLIR Systems se réserve le droit d'interrompre la fabrication de certains modèles de produits, de pièces, d'accessoires, ou de tout autre composant, ou d'en modifier les spécifications à tout moment et sans préavis.

### 5.3 Vue de face

Voir Figure 1.1 *View from the front*, page 1.

1. Caméra en lumière visible.
2. Caméra thermique.
3. Connecteur du téléphone.
4. Contrôle de la hauteur OneFit.

### 5.4 Vue inférieure

Voir Figure 1.2 *View from the bottom*, page 1.

1. Interrupteur marche/arrêt et indicateur d'alimentation.
2. Indicateur de chargement LED.
3. Connecteur d'alimentation USB-C.

### 5.5 Guide de démarrage rapide

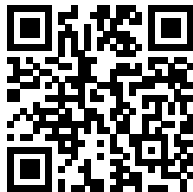
1. Chargez la caméra FLIR ONE pendant environ 1 heure.
2. Téléchargez et installez l'application FLIR ONE sur votre téléphone. L'application est disponible sur Apple App Store et sur Google Play Store.
3. Appuyez sur le bouton marche/arrêt sur la base de la caméra FLIR ONE pour l'allumer. Le témoin clignote en vert lorsque la caméra FLIR ONE est prête.

4. Branchez la caméra FLIR ONE à l'ordinateur. Si nécessaire, réglez le cadran bleu du OneFit et tirez le connecteur à la longueur appropriée pour l'adapter à l'étui de protection de votre téléphone.
5. Lancer l'application FLIR ONE sur votre téléphone. Il vous sera demandé de créer un compte utilisateur avec votre adresse e-mail et un mot de passe.
6. Au bas de l'écran et sur la barre noire, faites défiler les informations et sélectionnez le mode Photo.
7. Au bas de l'écran, appuyez sur le bouton rond blanc pour prendre une photo. L'image est enregistrée dans la Galerie.
8. La caméra passe automatiquement en mode veille après 2 minutes d'inactivité.
9. Maintenez le bouton Marche/Arrêt enfoncé pendant plus de 2 secondes pour éteindre la caméra FLIR ONE.

### 5.6 Veuillez lire le manuel avant utilisation

Rendez-vous sur le site Web suivant pour consulter ou télécharger le manuel :

<http://support.flir.com/resources/6ygz>



### 5.7 Étendez la garantie de votre produit

Enregistrez votre produit et profitez des avantages suivants :

- 2 ans de garantie sur la caméra.
- 10 ans de garantie sur le détecteur.

Rendez-vous sur le site Web suivant pour activer votre garantie étendue :

<http://support.flir.com/camreg>

**Remarque** Vous devez enregistrer votre produit dans les 60 jours suivant son achat.

### 5.8 Téléchargez FLIR Tools

FLIR Tools est une suite logicielle conçue pour mettre à jour votre caméra et créer des rapports d'inspection en toute facilité. Importez, analysez et ajustez

vos images en toute simplicité pour les intégrer dans des documents à partager pour convaincre de la nécessité des réparations à effectuer.

Rendez-vous sur le site Web suivant pour télécharger FLIR Tools :

<http://support.flir.com/tools>

### **5.9 Enrichissez les fonctions de votre caméra FLIR grâce à des applications sur mesure**

Grâce aux applications compatibles FLIR, vous accédez à de nouvelles solutions thermiques adaptées à vos besoins spécifiques. Les caméras thermiques FLIR prennent en charge un large écosystème d'applications développées par FLIR et ses éditeurs de logiciel partenaires.

Une de ces solutions est FLIR InSite, qui rationalise votre flux de travail d'inspection thermique.

Rendez-vous sur le site Web suivant pour en savoir plus sur FLIR InSite :

<http://flir.com/insite>

### **5.10 Assistance clientèle**

N'hésitez pas à contacter notre centre d'assistance clientèle sur la page <http://support.flir.com> si vous rencontrez des problèmes ou avez des questions concernant votre produit.

## 6 IT-IT Italiano

---

### 6.1 Grazie!

Grazie per aver scelto un prodotto FLIR Systems. Ci auguriamo che il prodotto sia all'altezza delle aspettative e che vorrà scegliere nuovamente i nostri prodotti in futuro.

### 6.2 Elenco del contenuto

- Termocamera a infrarossi.
- Custodia.
- Cavo USB.

**Nota** FLIR Systems si riserva il diritto di interrompere la produzione di alcuni modelli, parti o accessori e di altri elementi o di cambiarne le specifiche in qualunque momento senza alcun preavviso.

### 6.3 Vista anteriore

Vedere Figure 1.1 *View from the front*, pagina 1.

1. Videocamera.
2. Termocamera.
3. Connettore telefonico.
4. Controllo dell'altezza OneFit.

### 6.4 Vista dal basso

Vedere Figure 1.2 *View from the bottom*, pagina 1.

1. Interruttore di accensione/spengimento e indicatore di alimentazione.
2. Indicatore LED di ricarica.
3. Connettore di alimentazione USB-C

### 6.5 Guida introduttiva

1. Ricaricare la termocamera FLIR ONE per 1 ora circa.
2. Scaricare e installare l'app FLIR ONE sul proprio telefono. L'app è disponibile su Apple App Store e Google Play Store.
3. Premere il pulsante di accensione/spengimento sulla parte inferiore della termocamera FLIR ONE per accenderla. L'indicatore lampeggia in verde quando la termocamera FLIR ONE è pronta.

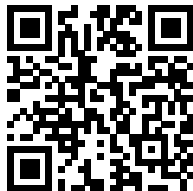


4. Collegare la termocamera FLIR ONE al telefono. Se necessario, regolare il selettore blu di OneFit ed estendere il connettore in modo che si adatti alla custodia protettiva del telefono.
5. Avviare l'app FLIR ONE sul telefono. Verrà richiesto di creare un account utente con il proprio indirizzo e-mail e una password.
6. Nella parte inferiore dello schermo e sulla barra nera, scorrere per selezionare la modalità Foto.
7. Nella parte inferiore dello schermo, toccare il pulsante rotondo bianco per acquisire un'istantanea. L'immagine viene salvata nella Galleria.
8. La termocamera entra automaticamente in modalità standby dopo 2 minuti di inattività.
9. Tenere premuto il pulsante di accensione/spegnimento per più di 2 secondi per spegnere la termocamera FLIR ONE.

### 6.6 Leggere il manuale prima dell'utilizzo

Accedere al seguente sito Web per leggere o scaricare il manuale:

<http://support.flir.com/resources/6ygz>



### 6.7 Estensione della garanzia del prodotto

Registrando il prodotto, si riceverà quanto segue:

- 2 anni di garanzia per la termocamera.
- 10 anni di garanzia per il rilevatore.

Accedere al seguente sito Web per attivare la garanzia estesa:

<http://support.flir.com/camreg>

**Nota** La registrazione deve essere completata entro 60 giorni dall'acquisto.

### 6.8 Download di FLIR Tools

FLIR Tools è una suite di software progettata specificamente per semplificare l'aggiornamento della termocamera e la creazione di report di ispezione. Consente, inoltre, di importare, analizzare e ottimizzare le immagini con facilità e di

inserirle in documenti per condividere i risultati e giustificare gli interventi di riparazione.

Accedere al seguente sito Web per scaricare FLIR Tools:

<http://support.flir.com/tools>

### **6.9 Potenziate la vostra termocamera FLIR con le app personalizzate**

Le app compatibili con FLIR aprono la strada a nuove tipologie di soluzioni termiche adatte alle esigenze specifiche. Le termocamere FLIR supportano un ampio ecosistema di applicazioni sviluppate da FLIR e dai rispettivi partner software.

Una di queste soluzioni è FLIR InSite, che ottimizza il flusso dell'ispezione termica.

Accedere al seguente sito Web per maggiori informazioni su FLIR InSite:

<http://flir.com/insite>

### **6.10 Assistenza clienti**

In caso di problemi o domande sul prodotto, contattare il Centro di assistenza clienti all'indirizzo <http://support.flir.com>.

## 7 JA-JP 日本語

---

### 7.1 ご購入ありがとうございます

FLIR Systems の製品をご購入いただきありがとうございます。本製品がお客様のご期待に沿い、今後も弊社製品をご利用いただけましたら幸いです。

### 7.2 同梱物

- 赤外線カメラ
- ポーチ。
- USB ケーブル

注 FLIR Systems は、事前の通知なく、どの時点においてもモデル、部品や付属品、およびその他のアイテムを製造中止にしたり、仕様を変更したりする権限を有します。

### 7.3 前面からの外観

Figure 1.1 *View from the front*, ページ 1 を参照してください。

1. 可視カメラ
2. 赤外線カメラ
3. スマートフォン用コネクタ。
4. OneFit 高さ調整。

### 7.4 下側からの外観

Figure 1.2 *View from the bottom*, ページ 1 を参照してください。

1. オン/オフスイッチと電源インジケータ。
2. 充電インジケータ LED。
3. USB-C 電源コネクタ。

### 7.5 クイックスタートガイド

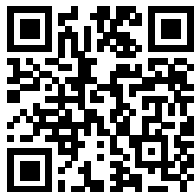
1. FLIR ONE カメラを約 1 時間充電します。
2. お使いのスマートフォンに FLIR ONE アプリをダウンロードしてインストールします。このアプリはアップル App Store と Google Play Store から入手できます。
3. FLIR ONE カメラ下部のオン/オフ ボタンを押して電源をオンにします。FLIR ONE カメラが使用可能になるとインジケータが緑に点滅します。
4. FLIR ONE カメラをスマートフォンに接続します。必要に応じて OneFit 上の青いダイヤルを調整し、スマートフォンの保護ケースにフィットするようコネクタを適切な長さまで広げます。

5. FLIR ONE アプリをスマートフォンで起動します。電子メールアドレスとパスワードを使用してユーザーアカウントを作成するよう求められます。
6. 画面下部と黒色のバーをスワイプして、[写真] モードを選択します。
7. 画面下部の白い丸ボタンをタップして、スナップショットを記録します。画像はギャラリーに保存されます。
8. 何も操作しないままだと、2分後にスリープモードに移行します。
9. FLIR ONE カメラの電源を切るには、オン/オフ ボタンを2秒以上長押しします。

### 7.6 使用前にマニュアルをお読みください。

以下の Web サイトに移動して、マニュアルを読むかダウンロードしてください。

<http://support.flir.com/resources/6ygz>



### 7.7 製品保証の延長

製品を登録すると、下記の保証が受けられます。

- カメラの2年保証。
- 検出器の10年保証。

以下の Web サイトに移動して、延長保証を有効にしてください。

<http://support.flir.com/camreg>

注 登録は、ご購入から60日以内に行ってください。

### 7.8 FLIR Tools のダウンロード

FLIR Tools は、カメラの更新と検査レポートの作成を容易にするソフトウェアスイートです。簡単な操作で画像のインポート、解析、編集ができます。調査結果を共有し、修理の妥当性を証明するために、その情報を簡潔な文書にまとめます。

以下の Web サイトに移動して、FLIR Tools をダウンロードしてください。

<http://support.flir.com/tools>

### 7.9 カスタマイズされたアプリでお使いの FLIR カメラを向上させます

FLIRと互換性のあるアプリにより、固有の要件に応じてカスタマイズされた新しいタイプの赤外線ソリューションとして利用できます。FLIR 赤外線カメラは、FLIR およびそのソフトウェア パートナーによって開発された、幅広いアプリケーションのエコシステムをサポートしています。

そのソリューションの 1 つが、FLIR InSite です。これは赤外線検査のワークフローを合理化します。

FLIR InSite の詳細については、以下の Web サイトをご覧ください。

<http://flir.com/insite>

### 7.10 顧客サポート

問題が発生した場合や製品について質問がある場合には、お客様サポート センター (<http://support.flir.com>) までお問い合わせください。

## 8 KO-KR 한국어

---

### 8.1 감사합니다!

FLIR Systems의 제품을 선택해 주셔서 감사합니다. 저희 제품이 귀하의 기대를 충족하기를 바라면서 향후에 필요할 경우에도 저희 제품을 다시 한 번 찾아주시면 좋겠습니다.

### 8.2 내용 목록

- 적외선 카메라
- 파워치.
- USB 케이블

참고 FLIR Systems는 언제든지 사전 통지 없이 모델, 부품과 액세서리 및 기타 품목의 생산을 중단하거나 제품 사양을 변경할 수 있는 권리를 보유합니다.

### 8.3 전면도

Figure 1.1 *View from the front*, 페이지 1 참조.

1. 실영상 카메라.
2. 열화상 카메라.
3. 휴대폰 커넥터.
4. OneFit 높이 컨트롤.

### 8.4 밑면도

Figure 1.2 *View from the bottom*, 페이지 1 참조.

1. 켜기/끄기 스위치 및 전원 표시등.
2. 충전 표시등 LED.
3. USB-C 전원 커넥터.

### 8.5 퀵 스타트 가이드

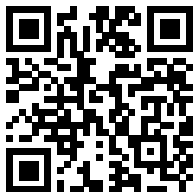
1. FLIR ONE 카메라를 약 1시간 동안 충전합니다.
2. 휴대폰에 FLIR ONE 앱을 다운로드하여 설치합니다. 앱은 Apple App Store 및 Google Play Store에서 제공됩니다.
3. FLIR ONE 카메라 하단의 켜기/끄기 버튼을 눌러 카메라를 켭니다. FLIR ONE 카메라가 준비되면 표시등이 녹색으로 깜박입니다.
4. FLIR ONE 카메라를 휴대폰에 연결합니다. 필요한 경우, OneFit의 파란색 다 이얼을 조정하고 커넥터를 휴대폰의 보호 케이스에 알맞게 적절한 길이로 연결합니다.

5. 휴대폰에서 FLIR ONE 앱을 시작합니다. 이메일 주소와 암호를 사용하여 사용자 계정을 생성하라는 안내가 나타납니다.
6. 화면 하단에서 검은색 막대를 밀어 사진 모드를 선택합니다.
7. 화면 하단에서 동그란 흰색 버튼을 눌러 스냅샷을 찍습니다. 이미지가 갤러리에 저장됩니다.
8. 무작동 시간이 2분을 경과한 후에는 카메라가 자동으로 휴면 모드에 들어갑니다.
9. FLIR ONE 카메라를 끄려면 켜기/끄기 버튼을 2초 이상 길게 누릅니다.

### 8.6 사용하기 전에 설명서 읽기

다음 웹 사이트로 이동하여 매뉴얼을 읽거나 다운로드하십시오.

<http://support.flir.com/resources/6ygz>



### 8.7 제품 보증 연장

다음을 받으려면 제품을 등록하십시오.

- 2년 카메라 보증.
- 10년 감지기 보증.

연장 보증 서비스를 활성화하려면 다음 웹 사이트로 이동하십시오.

<http://support.flir.com/camreg>

참고 구매일로부터 60일 이내에 등록해야 합니다.

### 8.8 FLIR Tools 다운로드

FLIR Tools는 카메라를 손쉽게 업데이트하고 조사 보고서를 작성할 수 있도록 고안된 소프트웨어 제품군입니다. 간편하게 이미지를 불러오고, 분석하고, 편집한 뒤 결과를 공유하고 수리할 부분을 파악하여 문서에 포함합니다.

다음 웹 사이트로 이동하여 FLIR Tools를 다운로드하십시오.

<http://support.flir.com/tools>

### 8.9 맞춤형 앱으로 FLIR 카메라 개선

FLIR 호환 앱을 사용하면 특정 요구에 알맞은 새로운 종류의 열화상 솔루션 세계를 만나볼 수 있습니다. FLIR 열화상 카메라는 FLIR와 소프트웨어 파트너가 개발한 폭넓은 애플리케이션 에코시스템을 지원합니다.

이러한 솔루션 중 하나는 열화상 검사 작업순서를 간소화하는 FLIR InSite입니다.

FLIR InSite에 대해 자세히 알아보려면 다음 웹 사이트로 이동하십시오.

<http://flir.com/insite>

### 8.10 고객 지원

제품에 문제가 있거나 문의 사항이 있는 경우 고객 서비스 센터(<http://support.flir.com>)로 언제든지 연락 주시기 바랍니다.



## 9 NL-NL Nederlands

---

### 9.1 Dank u!

Hartelijk dank voor de aanschaf van een product van FLIR Systems. Wij vertrouwen erop dat het product aan uw verwachtingen voldoet en dat u in de toekomst opnieuw voor een product van FLIR Systems zult kiezen.

### 9.2 Inhoud

- Infraroodcamera.
- Tas
- USB-kabel.

**Opm.** FLIR Systems behoudt zich te allen tijde het recht voor om zonder voorafgaande kennisgeving bepaalde modellen, onderdelen of accessoires en andere artikelen uit de handel te nemen of specificaties te wijzigen.

### 9.3 Vooraanzicht

Zie Figure 1.1 *View from the front*, pagina 1.

1. Visuele camera
2. Warmtebeeldcamera
3. Telefoonaansluiting
4. OneFit-hoogteregeling

### 9.4 Van onderen weergeven

Zie Figure 1.2 *View from the bottom*, pagina 1.

1. Aan/uit-schakelaar en voedingslampje
2. Laadcontrole-led
3. USB-C-voedingsconnector

### 9.5 Snelstartgids

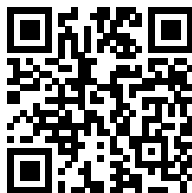
1. Laad de FLIR ONE-camera gedurende ongeveer 1 uur.
2. Download en installeer de FLIR ONE-app op uw telefoon. De applicatie is beschikbaar in de Apple App Store en de Google Play Store.
3. Druk op de aan/uit-knop aan de onderkant van de FLIR ONE-camera om deze in te schakelen. De indicator knippert groen wanneer de FLIR ONE-camera gereed is.

4. Sluit de FLIR ONE-camera aan op uw telefoon. Stel indien nodig de blauwe schijf van de OneFit af en schuif de connector uit tot de vereiste lengte voor uw telefoonhoesje.
5. Start de FLIR ONE-app op uw telefoon. U wordt verzocht om een gebruikersaccount te maken met uw e-mailadres en een wachtwoord.
6. Veeg onder in het scherm op de zwarte balk om de fotomodus te selecteren.
7. Tik onder in het scherm op de ronde witte knop om een foto te maken. De foto wordt opgeslagen in de galerij.
8. De camera schakelt automatisch over naar de slaapstand wanneer hij 2 minuten niet is gebruikt.
9. Houd de aan/uit-knop langer dan 2 seconden ingedrukt om de FLIR ONE-camera uit te schakelen.

### 9.6 Lees de handleiding vóór gebruik

Ga naar de volgende website om de handleiding te lezen of te downloaden:

<http://support.flir.com/resources/6ygz>



### 9.7 Uw productgarantie verlengen

Registreer uw product en ontvang:

- 2 garantie op de camera;
- 10 jaar garantie op de detector.

Ga naar de onderstaande website om uw verlengde garantie te activeren:

<http://support.flir.com/camreg>

**Opm.** De registratie moet binnen 60 dagen na aankoop zijn voltooid.

### 9.8 FLIR Tools downloaden

FLIR Tools is een softwarepakket dat is ontworpen voor het eenvoudig updaten van uw camera en het maken van inspectierapporten. Importeren, analyseer en bewerk afbeeldingen eenvoudig en voeg ze vervolgens toe aan documenten om uw bevindingen te delen en reparaties te rechtvaardigen.

Ga naar deze website om FLIR Tools te downloaden:

<http://support.flir.com/tools>

### 9.9 Haal méér uit uw FLIR-camera met speciale toepassingen

Met FLIR-compatibele apps opent u de deur naar nieuwe soorten thermische oplossingen die zijn toegesneden op uw specifieke behoeften. Warmtebeeldcamera's van FLIR ondersteunen een breed scala aan toepassingen die zijn ontwikkeld door FLIR en zijn softwarepartners.

Een van deze oplossing is FLIR InSite, waarmee u uw workflow voor warmtebeeldinspecties kunt stroomlijnen.

Ga naar de volgende website voor meer informatie over FLIR InSite:

<http://flir.com/in-site>

### 9.10 Klantenondersteuning

Aarzel niet om contact op te nemen met onze klantenservice op <http://support.flir.com> indien u problemen ondervindt of vragen hebt over uw product.

# 10 PT-PT Português

---

## 10.1 Obrigado!

Obrigado por escolher um produto da FLIR Systems. Esperamos que este produto cumpra as suas expectativas e que nos considere novamente para as suas necessidades futuras.

## 10.2 Lista de conteúdos

- Câmara de infravermelhos.
- Bolsa.
- Cabo USB.

**Nota** A FLIR Systems reserva-se o direito de suprimir modelos, peças ou acessórios e outros artigos ou de alterar especificações em qualquer altura sem aviso prévio.

## 10.3 Perspetiva da parte frontal

Consulte Figure 1.1 *View from the front*, página 1.

1. Câmara de visualização.
2. Câmara térmica (IV).
3. Conetor de telemóvel.
4. Controlo de altura OneFit.

## 10.4 Perspetiva inferior

Consulte Figure 1.2 *View from the bottom*, página 1.

1. Botão Ligar/Desligar e indicador de alimentação.
2. Indicador LED de carregamento.
3. Conetor de alimentação USB-C.

## 10.5 Manual de iniciação rápida

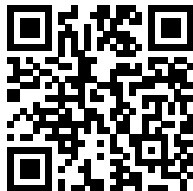
1. Carregue a câmara FLIR ONE durante cerca de 1 hora.
2. Transfira e instale a aplicação FLIR ONE no seu telemóvel. A aplicação está disponível na Apple App Store e na Google Play Store.
3. Prima o botão Ligar/Desligar na parte inferior da câmara FLIR ONE para a ligar. O indicador emitirá uma luz verde quando a câmara FLIR ONE estiver pronta.

4. Ligue a câmara FLIR ONE ao seu telemóvel. Se necessário, ajuste o indicador azul do OneFit e prolongue o conetor até ao comprimento adequado para caber na capa de proteção do seu telemóvel.
5. Inicie a aplicação FLIR ONE no seu telemóvel. Ser-lhe-á pedido que crie uma conta de utilizador com o seu endereço de e-mail e uma palavra-passe.
6. Na parte inferior do ecrã e na barra preta, deslize para selecionar o modo Fotografia.
7. Na parte inferior do ecrã, toque no botão branco redondo para tirar uma fotografia. A imagem é guardada na Galeria.
8. A câmara entra automaticamente em modo de suspensão após 2 minutos de inatividade.
9. Mantenha premido o botão Ligar/Desligar durante mais de 2 segundos para desligar a câmara FLIR ONE.

### 10.6 Leia o manual antes da utilização

Aceda ao seguinte website para ler ou transferir o manual:

<http://support.flir.com/resources/6ygz>



### 10.7 Aumente a garantia do seu produto

Registe o seu produto para receber:

- 2 anos de garantia para a câmara.
- 10 anos de garantia para o detetor.

Aceda ao seguinte website para ativar a sua garantia alargada:

<http://support.flir.com/camreg>

**Nota** O registo deve ser concluído nos 60 dias após a data de compra.

### 10.8 Transferir o FLIR Tools

O FLIR Tools é um pacote de software concebido para facilitar a atualização da sua câmara e a criação de relatórios de inspeção. Importe, analise e edite

imagens facilmente e, em seguida, inclua-as em documentos para partilhar descobertas e justificar reparações.

Aceda ao seguinte website para transferir o FLIR Tools:

<http://support.flir.com/tools>

### 10.9 Melhore a sua câmara FLIR com aplicações personalizadas

Conheça novos tipos de soluções térmicas adaptadas às suas necessidades específicas através de aplicações compatíveis com o FLIR. As câmaras térmicas FLIR suportam uma grande variedade de aplicações desenvolvidas pela FLIR e pelos seus parceiros de software.

Uma destas soluções é o FLIR InSite, que agiliza o seu fluxo de trabalho durante a inspeção térmica.

Aceda ao seguinte Website para saber mais acerca do FLIR InSite:

<http://flir.com/insite>

### 10.10 Apoio ao cliente

Não hesite em contactar o nosso Centro de Apoio ao Cliente em <http://support.flir.com> caso encontre algum problema ou tenha alguma dúvida sobre o seu produto.

# 11 RU-RU Русский

---

## 11.1 Спасибо!

Благодарим вас за выбор оборудования FLIR Systems. Мы надеемся, что наше оборудование оправдает все ваши ожидания, и вы продолжите использовать нашу продукцию в будущем.

## 11.2 Перечень содержимого

- Инфракрасная камера.
- Футляр.
- Кабель USB.

**Примечание** Компания FLIR Systems оставляет за собой право в любое время прекращать выпуск моделей, деталей, дополнительного оборудования и принадлежностей или изменять характеристики без предварительного уведомления.

## 11.3 Вид спереди

См. Figure 1.1 *View from the front*, страницы 1.

1. камера видимого диапазона;
2. тепловизионная камера;
3. Разъем телефона.
4. Настройка высоты OneFit.

## 11.4 Вид снизу

См. Figure 1.2 *View from the bottom*, страницы 1.

1. Индикатор и кнопка включения/выключения питания.
2. Светодиодный индикатор зарядки.
3. Разъем питания USB-C.

## 11.5 Руководство по немедленному использованию

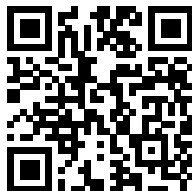
1. Зарядите камеру FLIR ONE в течение прибл. 1 часа.
2. Загрузите и установите приложение FLIR ONE в телефон. Приложение доступно в магазинах App Store и Google Play.
3. Чтобы включить камеру, нажмите кнопку включения/выключения питания в нижней части камеры FLIR ONE. Когда камера будет готова к работе FLIR ONE, индикатор загорится зеленым светом.

4. Подключите камеру FLIR ONE к телефону. При необходимости поверните синий регулятор настройки высоты OneFit, чтобы выдвинуть разъем на высоту, соответствующую размерам защитного чехла телефона.
5. Запустите приложение FLIR ONE на телефоне. Приложение попросит создать учетную запись пользователя и указать адрес электронной почты и пароль.
6. Чтобы выбрать режим "Фото", проведите пальцем по черной панели в нижней части экрана.
7. Чтобы сделать быстрый снимок, нажмите на белую круглую кнопку в нижней части экрана. Это изображение сохранится в каталог снимков.
8. После 2 минут бездействия камера автоматически переходит в режим энергосбережения.
9. Для выключения камеры FLIR ONE снова нажмите кнопку включения/отключения питания и удерживайте ее не менее 2 секунд.

### 11.6 Прочитайте руководство перед началом работы

Перейдите на указанный сайт, чтобы прочитать или загрузить руководство:

<http://support.flir.com/resources/6ygz>



### 11.7 Продлите гарантию на продукт

Зарегистрируйте ваш продукт сейчас, чтобы получить:

- 2 года гарантии на камеру.
- 10 лет гарантии на детектор.

Перейдите на указанный сайт, чтобы активировать расширенную гарантию:

<http://support.flir.com/camreg>

**Примечание** Регистрацию необходимо завершить в течение 60 дней с момента покупки.



### 11.8 Загрузка FLIR Tools

FLIR Tools – это пакет программного обеспечения, предназначенный для обновления встроенной программы камеры, а также для создания отчетов по результатам измерений. Импортировать, анализировать и настраивать изображения стало просто. Для предоставления информации об условиях и для обоснования ремонтных работ достаточно вставить их в сжатые документы.

Перейдите на указанный сайт, чтобы загрузить FLIR Tools:

<http://support.flir.com/tools>

### 11.9 Расширьте возможности вашей камеры FLIR с помощью специальных приложений

С FLIR-совместимыми приложениями перед вами откроется мир новейших решений по тепловой визуализации, подходящих для ваших индивидуальных требований. Тепловизионные камеры FLIR поддерживают большую экосистему приложений, разработанную FLIR и ее программными партнерами.

Одним из таких решений является FLIR InSite, оно усовершенствует ваши тепловизионные проверки.

Перейдите на указанный сайт, чтобы узнать больше о FLIR InSite:

<http://flir.com/insite>

### 11.10 Поддержка клиентов

В случае возникновения каких-либо проблем или вопросов по нашей продукции обратитесь в центр поддержки клиентов, посетив сайт <http://support.flir.com>.

## 12 ZH-CN 简体中文

---

### 12.1 感谢！

感谢您选用 FLIR Systems 的产品。我们希望这款产品能够满足您的期望，并且您在将来有需求时，会再度选购我公司的产品。

### 12.2 内容清单

- 红外热像仪。
- 小袋。
- USB 线缆。

注意 FLIR Systems 保留在未予事先通知的情况下，随时中止供应某些型号、部件或附件及其他物件，或更改相应规格的权利。

### 12.3 前视图

请参阅 Figure 1.1 *View from the front*, 页面 1。

1. 可见光相机。
2. 热像仪。
3. 手机接口。
4. OneFit 高度控制。

### 12.4 底视图

请参阅 Figure 1.2 *View from the bottom*, 页面 1。

1. 开启/关闭开关和电源指示灯。
2. 充电 LED 指示灯。
3. USB-C 电源接口。

### 12.5 快速入门指南

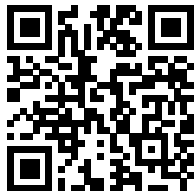
1. 将 FLIR ONE 热像仪充电大约 1 小时。
2. 在您的手机上下载并安装 FLIR ONE 应用程序。该应用程序在 Apple App Store 和 Google Play Store 中均提供下载。
3. 按下 FLIR ONE 热像仪底部的开/关按钮启动热像仪。当 FLIR ONE 热像仪就绪时，指示灯将闪烁绿光。
4. 将 FLIR ONE 热像仪连接到手机上。如有需要，调节 OneFit 上的蓝色表盘，将接口延伸至适当长度，以匹配您的手机保护壳。
5. 在您的手机上打开 FLIR ONE 应用程序。您需要使用电子邮件地址和密码创建用户帐户。
6. 在屏幕底部的黑色菜单栏上，滑动选择照片模式。

7. 点击屏幕底部的白色圆形按钮拍摄照片。图像将保存至图库。
8. 如果热像仪在 2 分钟内处于无操作状态，则将自动进入休眠模式。
9. 按住开/关按钮超过 2 秒即可关闭 FLIR ONE 热像仪。

### 12.6 使用前请阅读手册

请访问以下网站阅读或下载手册：

<http://support.flir.com/resources/6ygz>



### 12.7 延长产品保修期

注册您的产品即可获得：

- 2 年热像仪保修。
- 10 年探测器保修。

请访问以下网站激活您的延长保修服务：

<http://support.flir.com/camreg>

注意 注册必须在自购买之日起的 60 日内完成。

### 12.8 下载 FLIR Tools

FLIR Tools 是设计用于轻松更新热像仪和创建检查报告的软件套件。轻松导入、分析和编辑图像，然后将它们整合在文件中，以分享发现和佐证维修。

请访问以下网站下载 FLIR Tools：

<http://support.flir.com/tools>

### 12.9 使用定制化应用程序，增强 FLIR 热像仪功能

通过使用与 FLIR 兼容的应用程序，您将打开全新定制化热解决方案的大门。FLIR 热像仪支持由 FLIR 及其软件合作伙伴开发的各种应用程序生态系统。

其中包括可简化热探测工作流程的 FLIR InSite。

请访问以下网站，了解关于 FLIR InSite 的更多详情：

<http://flir.com/insite>

### 12.10 客户支持

如果遇到问题或对产品有任何疑问，敬请访问我们的客户支持中心：

<http://support.flir.com>。





---

**Website**

<http://www.flir.com>

**Customer support**

<http://support.flir.com>

**Copyright**

© 2018, FLIR Systems, Inc. All rights reserved worldwide.

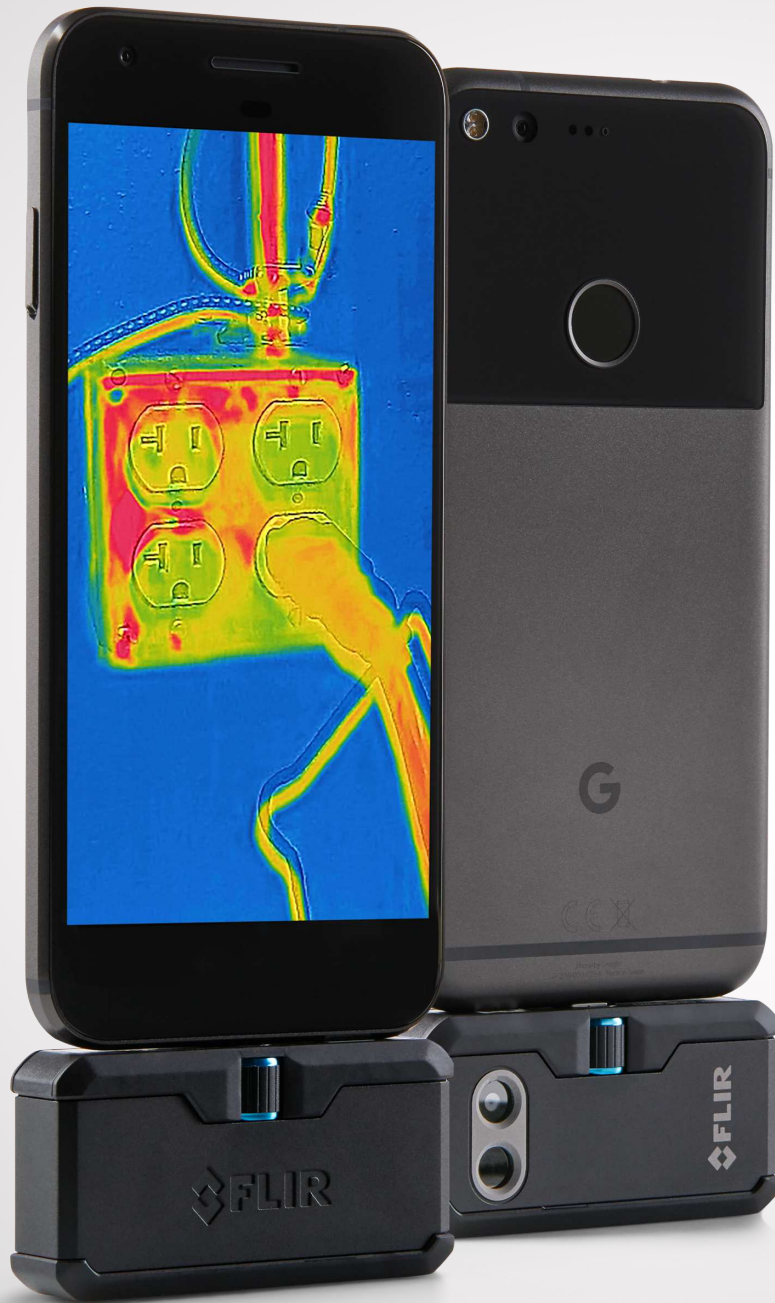
**Disclaimer**

Specifications subject to change without further notice. Models and accessories subject to regional market considerations. License procedures may apply. Products described herein may be subject to US Export Regulations. Please refer to [exportquestions@flir.com](mailto:exportquestions@flir.com) with any questions.

Publ. No.: T810402  
Release: AB  
Commit: 51263  
Head: 51263  
Language: mul  
Modified: 2018-07-05  
Formatted: 2018-07-05



T810402

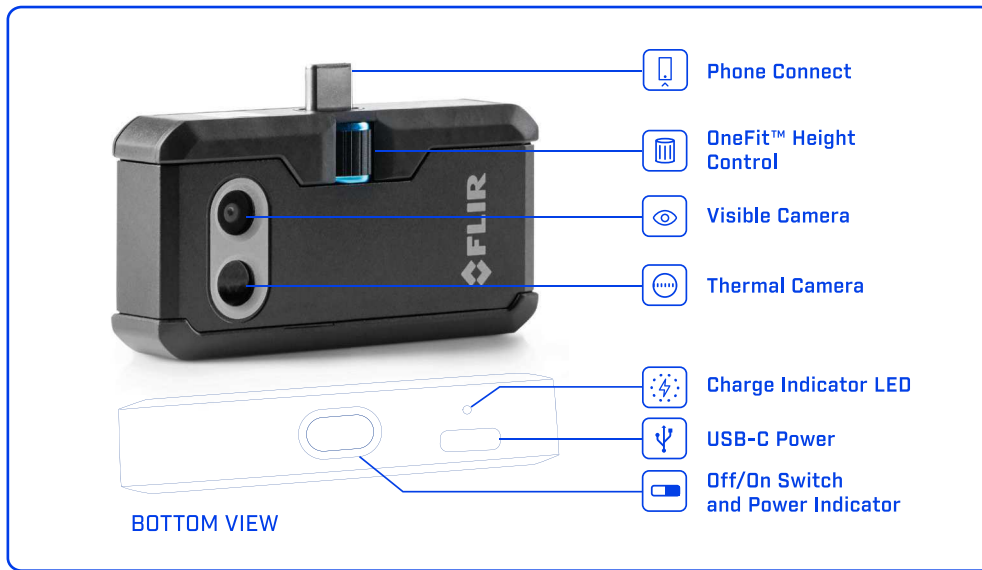


FLIR ONE PRO

USER GUIDE  
Third Generation  
For Android and iOS

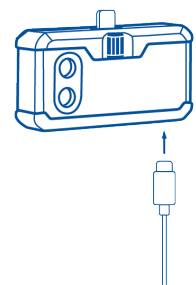
# FLIR ONE PRO USER GUIDE

The FLIR ONE Pro allows you to see the world in a whole new way, with a unique blend of thermal and visible imaging. This User Guide provides the information you will need to use the FLIR ONE Pro.



## CHARGING THE FLIR ONE PRO

Plug the USB-C end of the power cable into the FLIR ONE Pro and plug the other end into a 1A power source. The Charge Indicator LED will blink while the device is charging. The FLIR ONE Pro will charge to full capacity in about 1 hour. When the device is fully charged, the Charge Indicator LED will be on continuously. The FLIR ONE Pro is not intended to be charged while in use.





## FLIR ONE APP

The latest version of the FLIR ONE app is available on the Apple App Store for iOS and Google Play Store for Android. Download and install the app, then start it. Turn on the FLIR ONE Pro and connect it to your phone. If the FLIR ONE Pro is turned off, the app will prompt you to attach your FLIR ONE Pro camera before you can view the camera feature.

## APP OVERVIEW

At the top of the screen there is a black bar with icons for the slide-out menu, Spot Meter, Torch, Timer, and Calibration. Below that is the live image, and at the bottom of the screen is another black bar with icons for the Gallery, Camera, Image Controls, and Mode (Photo, Video, or Time Lapse).

## TAKING PICTURES

At the top of the bottom bar, swipe right or left to select Photo mode. Tap the round white button at the bottom of the screen to save a snapshot. The images are saved to the Gallery. In the App Settings, it is also possible to have the images saved to the phone's image library. To view the most recent saved image, tap on the thumbnail in the lower left. When viewing an image, swipe up or down on the image to reveal the underlying image from the visible camera. It is not necessary to have the FLIR ONE Pro camera attached to the phone to view saved images.

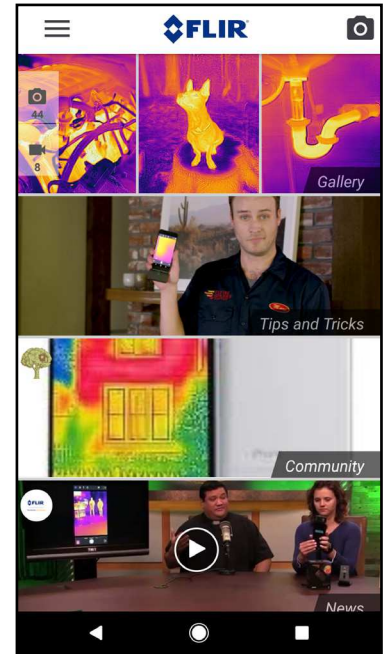
## TAKING VIDEO

At the top of the bottom bar, swipe right or left to select Video mode. Then tap on the red button to begin video capture. Tap on the red button again to stop the video capture and save the video in the FLIR Library. To view the captured video, tap the thumbnail image in the lower left of the screen to access the Gallery.

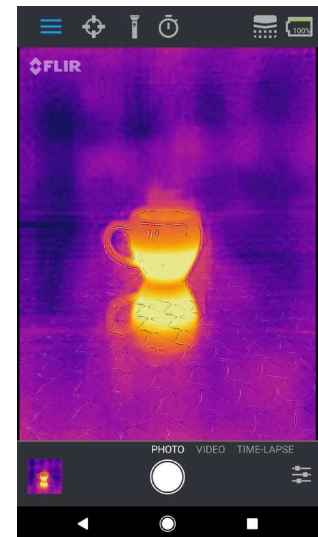
## TIME-LAPSE VIDEO

At the top of the bottom bar, swipe right to select Time-Lapse mode. Then tap on the red button to display the Time-Lapse options. Adjust the options as needed, and then tap the red button to begin video capture. Tap on the red button again to stop the video capture.

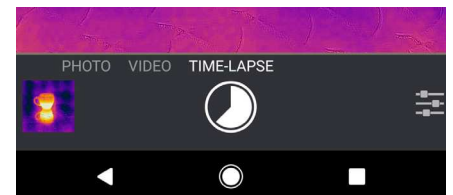
FLIR ONE APP



MODE SCREEN



TIME-LAPSE VIDEO



## MY GALLERY

Captured images and video may be viewed and edited by selecting the thumbnail image in the lower left corner of the screen. Images and videos may be shared through text messaging or email and may be edited by changing the color palette or the temperature scale. While an image is being viewed, it is possible to swipe up or down to reveal the visible image that is used for MSX® blending.

## CHANGING COLOR PALETTES

On the display (the live image), tap the Imaging Options menu in the bottom right corner of the screen. Tap the Color Palette icon to change how the image is displayed. Select one of the displayed color palettes. The app allows a choice from nine different palettes that include color, grayscale, or a combination of both.

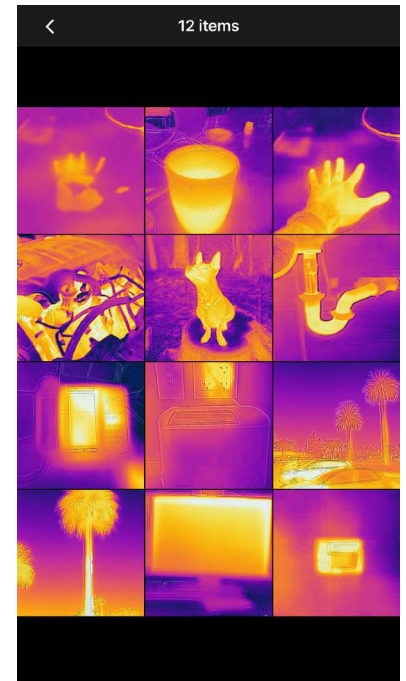
## IR SCALE

The FLIR ONE Pro will show you the temperature range of the scene, and allow you to adjust the temperature mapping, using a feature called IR Scale. To use, tap on the IR Scale icon in the Imaging Options menu. The scale will appear on the left side of the screen, with the high and low temperatures labeled. You can adjust the color mapping by pressing and holding the bar and sliding it up or down. You can also manually tap the measurements and type in your selected limits.

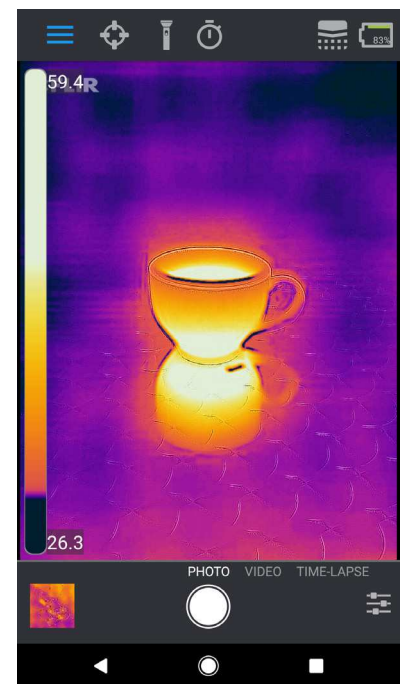
## GAIN MODE

The FLIR ONE Pro has an extended range for the temperatures. It can measure, up to 400 degrees Celsius (752 degrees Fahrenheit). High gain is the standard mode. To use, tap the Gain mode icon within the Imaging Options menu. Select the Low option and use the spot meters or regions of interest as you would in the standard mode.

### MY GALLERY



### IR SCALE



## SPOT METERS AND REGIONS OF INTEREST (ROI)

When using spot meters and regions of interest, the FLIR ONE Pro will display a temperature average (in degrees C or F) on the image. The accuracy of the Spot Meter(s) depends on many factors, including the distance from the object, the ambient temperature, and the emissivity of the material being observed. Users are encouraged to learn more about the science of Thermography from [www.infraredtraining.com](http://www.infraredtraining.com). To switch between Fahrenheit to Celsius, use the Settings option in the Control Panel.

**Note:** To add spot meters and/or ROIs, tap on the Spot Meter icon in the top left corner to get a list of spot meters and ROIs. Up to three spot meters, three square ROIs, and three circular ROIs can be displayed at one time. Tap and hold the Spot Meter to move it around the screen. Pinch to adjust the size of the ROIs.

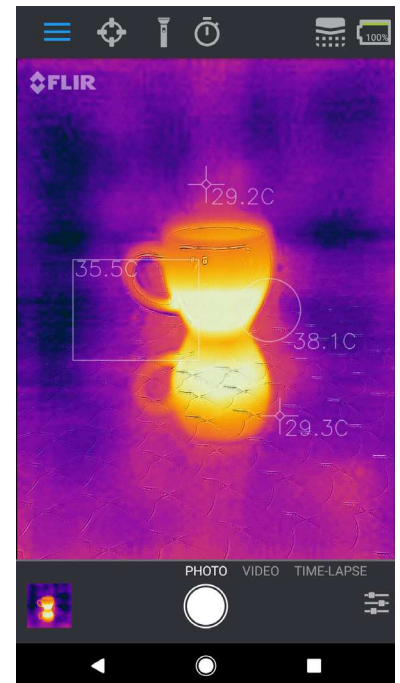
## TORCH

FLIR MSX is a patented technology which makes use of the visible camera in the FLIR ONE Pro to maximize detail and image sharpness. This feature requires some amount of visible light, so in dark environments turn on the smartphone's flashlight to enhance the image detail. This feature makes use of the light that is built into the phone.

## TIMER

The Timer option allows the user to set a time delay before an image is saved. When the Timer icon is selected, the Timer control panel is displayed. The user can set the time delay to 3 or 10 seconds or turn off the time delay option. When the Timer delay is enabled, the user saves an image by tapping the round white button at the bottom of the screen, and then a timer displays the countdown.

## SPOT METERS AND ROIs



## **AUTOMATIC CALIBRATION**

The camera has a mechanical shutter inside that periodically activates and allows the thermal camera to do a calibration or image refresh. When the shutter activates, the image will freeze for a brief period. When the camera first turns on, and periodically thereafter, the app will perform an automatic calibration to provide an optimal image. It is also possible to manually activate the shutter by tapping the Calibration icon in the upper right on the main screen. Calibration can be switched to manual by turning off Automatic Calibration in the Settings Menu.

## **MSX ALIGNMENT CONTROL**

The FLIR ONE Pro is tuned to align thermal and visual images at a distance of 3 meters. To view scenes close-up, use the MSX Distance slider control. Tap MSX Distance control to activate the slider control, then adjust the alignment by sliding the control. To exit the slider control, simply tap the icon again.

## **LOCK SPAN**

The Lock Span function locks the temperature range of colors in the display to the scene you are looking at. Simply tap the Lock Span icon to hold the range, and tap it again to return to auto-scaling of the scene.

## **SETTINGS MENU**

The Settings Menu allows the user to configure additional features on the FLIR ONE Pro, as described below.

### **SAVE LOCATION**

If a mobile phone signal is available, the location will be added to captured images. This makes it possible to see images on a map.

### **SAVE TO PHOTOS**

Turn this on to save a copy of your images and videos in the phone's photo gallery. Images will always be stored in the FLIR ONE Pro camera regardless of this setting. Items already captured will not be copied.

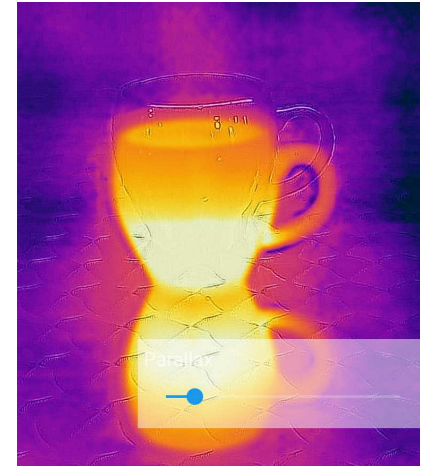
### **TEMPERATURE UNIT**

Use this setting to change the temperature unit of measure between the Fahrenheit and Celsius scale.

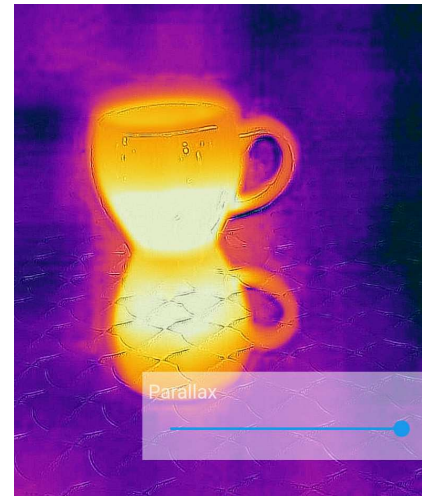
### **MSX DISTANCE SLIDER**



### **OFFSET**



### **ALIGNED**



## **EMISSIVITY**

When the Spot Meter is enabled, the temperature displayed is affected by many factors, including a property of the target material known as Emissivity. This property is a relative rating of how well a material emits or radiates thermal energy. Some materials are more emissive than others; glossy or reflective materials like metals tend to be poor emitters. For most materials, the default “matte” setting is a fair approximation.

## **HELP**

More information about the FLIR ONE Pro is available through the Help section and the Tips and Tricks content in the app.

## **ABOUT FLIR ONE**

The About FLIR ONE Pro menu option provides information about the FLIR ONE Pro camera, the FLIR ONE Pro app, our company FLIR Systems, Inc., and additional legal, licensing, and regulatory information.

### **WARNING**

The FLIR ONE and FLIR ONE Pro are not waterproof. Use caution if the FLIR ONE or FLIR ONE Pro are used to observe very hot objects like fire or molten metal.



---

# User's manual FLIR ONE series







---

# User's manual FLIR ONE series







# Table of contents

---

<b>1</b>	<b>Disclaimers</b> .....	<b>1</b>
1.1	Legal disclaimer .....	1
1.2	Usage statistics .....	1
1.3	Changes to registry .....	1
1.4	U.S. Government Regulations .....	1
1.5	Copyright .....	1
1.6	Quality assurance .....	1
1.7	Patents .....	1
1.8	EULA Terms .....	1
1.9	EULA Terms .....	1
<b>2</b>	<b>Safety information</b> .....	<b>2</b>
<b>3</b>	<b>Notice to user</b> .....	<b>3</b>
3.1	User-to-user forums .....	3
3.2	Disposal of electronic waste .....	3
3.3	Training .....	3
3.4	Documentation updates .....	3
3.5	Important note about this manual .....	3
3.6	Note about authoritative versions .....	4
<b>4</b>	<b>Customer help</b> .....	<b>5</b>
4.1	General .....	5
4.2	Submitting a question .....	5
4.3	Downloads .....	5
<b>5</b>	<b>Quick Start Guide</b> .....	<b>7</b>
5.1	Procedure .....	7
<b>6</b>	<b>Description</b> .....	<b>8</b>
6.1	View from the front .....	8
6.2	View from the bottom .....	8
6.3	The FLIR ONE App .....	8
6.3.1	Installation .....	8
6.3.2	The FLIR Cloud account .....	8
6.3.3	Bars and views .....	9
6.3.4	Imaging Control .....	9
<b>7</b>	<b>Operation</b> .....	<b>10</b>
7.1	Charging the battery .....	10
7.2	Turning the FLIR ONE camera on and off .....	10
7.3	Connecting the FLIR ONE camera to your phone .....	10
7.4	Saving an image .....	10
7.4.1	General .....	10
7.4.2	Procedure .....	11
7.5	Recording a video .....	11
7.5.1	General .....	11
7.5.2	Procedure .....	11
7.6	Recording a time-lapse video .....	11
7.6.1	General .....	11
7.6.2	Procedure .....	11
7.7	My Gallery .....	11
7.7.1	General .....	11
7.8	Palettes .....	12
7.8.1	General .....	12
7.8.2	Change settings .....	12
7.9	MSX Distance .....	12
7.9.1	General .....	12
7.9.2	Change settings .....	12
7.10	Temperature Range .....	12

## Table of contents

---

	7.10.1	General.....	12
	7.10.2	Change settings.....	12
7.11	IR Scale.....		12
	7.11.1	General.....	12
	7.11.2	Change settings.....	13
7.12	Lock Span.....		13
	7.12.1	General.....	13
	7.12.2	Change settings.....	13
7.13	Selfie Mode .....		13
	7.13.1	Change settings.....	13
7.14	Measuring.....		13
	7.14.1	General.....	13
	7.14.2	Add a spot meter or an area of interest.....	13
7.15	Torch.....		14
	7.15.1	General.....	14
	7.15.2	Use the torch.....	14
7.16	Self-timer .....		14
	7.16.1	General.....	14
	7.16.2	Use the self-timer .....	14
7.17	Automatic calibration .....		14
	7.17.1	General.....	14
7.18	Settings.....		14
	7.18.1	Location.....	14
	7.18.2	Photos.....	15
	7.18.3	Automatic Calibration.....	15
	7.18.4	Temperature Unit .....	15
	7.18.5	Emissivity .....	15
7.19	Help.....		15
7.20	About.....		15
<b>8</b>	<b>Cleaning the camera .....</b>		<b>16</b>
8.1	Camera housing, cables, and other items.....		16
	8.1.1	Liquids.....	16
	8.1.2	Equipment.....	16
	8.1.3	Procedure .....	16
8.2	Infrared lens .....		16
	8.2.1	Liquids.....	16
	8.2.2	Equipment.....	16
	8.2.3	Procedure .....	16
<b>9</b>	<b>CE Declaration of conformity .....</b>		<b>17</b>

## 1.1 Legal disclaimer

All products manufactured by FLIR Systems are warranted against defective materials and workmanship for a period of one (1) year from the delivery date of the original purchase, provided such products have been under normal storage, use and service, and in accordance with FLIR Systems instruction.

Uncooled handheld infrared cameras manufactured by FLIR Systems are warranted against defective materials and workmanship for a period of two (2) years from the delivery date of the original purchase, provided such products have been under normal storage, use and service, and in accordance with FLIR Systems instruction, and provided that the camera has been registered within 60 days of original purchase.

Detectors for uncooled handheld infrared cameras manufactured by FLIR Systems are warranted against defective materials and workmanship for a period of ten (10) years from the delivery date of the original purchase, provided such products have been under normal storage, use and service, and in accordance with FLIR Systems instruction, and provided that the camera has been registered within 60 days of original purchase.

Products which are not manufactured by FLIR Systems but included in systems delivered by FLIR Systems to the original purchaser, carry the warranty, if any, of the particular supplier only. FLIR Systems has no responsibility whatsoever for such products.

The warranty extends only to the original purchaser and is not transferable. It is not applicable to any product which has been subjected to misuse, neglect, accident or abnormal conditions of operation. Expendable parts are excluded from the warranty.

In the case of a defect in a product covered by this warranty the product must not be further used in order to prevent additional damage. The purchaser shall promptly report any defect to FLIR Systems or this warranty will not apply.

FLIR Systems will, at its option, repair or replace any such defective product free of charge if, upon inspection, it proves to be defective in material or workmanship and provided that it is returned to FLIR Systems within the said one-year period.

FLIR Systems has no other obligation or liability for defects than those set forth above.

No other warranty is expressed or implied. FLIR Systems specifically disclaims the implied warranties of merchantability and fitness for a particular purpose.

FLIR Systems shall not be liable for any direct, indirect, special, incidental or consequential loss or damage, whether based on contract, tort or any other legal theory.

This warranty shall be governed by Swedish law.

Any dispute, controversy or claim arising out of or in connection with this warranty, shall be finally settled by arbitration in accordance with the Rules of the Arbitration Institute of the Stockholm Chamber of Commerce. The place of arbitration shall be Stockholm. The language to be used in the arbitral proceedings shall be English.

## 1.2 Usage statistics

FLIR Systems reserves the right to gather anonymous usage statistics to help maintain and improve the quality of our software and services.

## 1.3 Changes to registry

The registry entry HKEY\_LOCAL\_MACHINE\SYSTEM\CurrentControlSet\Control\Lsa\LmCompatibilityLevel will be automatically changed to level 2 if the FLIR Camera Monitor service detects a FLIR camera connected to the computer with a USB cable. The modification will only be executed if the camera device implements a remote network service that supports network logons.

## 1.4 U.S. Government Regulations

This product may be subject to U.S. Export Regulations. Please send any inquiries to [exportquestions@flir.com](mailto:exportquestions@flir.com).

## 1.5 Copyright

© 2018, FLIR Systems, Inc. All rights reserved worldwide. No parts of the software including source code may be reproduced, transmitted, transcribed or translated into any language or computer language in any form or by any means, electronic, magnetic, optical, manual or otherwise, without the prior written permission of FLIR Systems.

The documentation must not, in whole or part, be copied, photocopied, reproduced, translated or transmitted to any electronic medium or machine readable form without prior consent, in writing, from FLIR Systems.

Names and marks appearing on the products herein are either registered trademarks or trademarks of FLIR Systems and/or its subsidiaries. All other trademarks, trade names or company names referenced herein are used for identification only and are the property of their respective owners.

## 1.6 Quality assurance

The Quality Management System under which these products are developed and manufactured has been certified in accordance with the ISO 9001 standard.

FLIR Systems is committed to a policy of continuous development; therefore we reserve the right to make changes and improvements on any of the products without prior notice.

## 1.7 Patents

000439161; 000653423; 000726344; 000859020; 001707738; 001707746; 001707787; 001776519; 001954074; 002021543; 002021543-0002; 002058180; 002249953; 002531178; 002816785; 002816793; 011200326; 014347553; 057692; 061609; 07002405; 100414275; 101796816; 101796817; 101796818; 102334141; 1062100; 11063060001; 11517895; 1226865; 12300216; 12300224; 1285345; 1299699; 1325808; 1336775; 1391114; 1402918; 1404291; 1411581; 1415075; 1421497; 1458284; 1678485; 1732314; 17399650; 1880950; 1886650; 2007301511414; 2007303395047; 2008301285812; 2009301900619; 20100060357; 2010301761271; 2010301761303; 2010301761572; 2010305959313; 2011304423549; 2012304717443; 2012306207318; 2013302676195; 2015202354035; 2015304259171; 204465713; 204967995; 2106017; 2107799; 2115696; 2172004; 2315433; 2381417; 2794760001; 3006596; 3006597; 303330211; 4358936; 483782; 484155; 4889913; 4937897; 4995790001; 5177595; 540838; 579475; 584755; 599392; 60122153; 6020040116815; 602006006500.0; 6020080347796; 6020110003453; 615113; 615116; 664580; 664581; 665004; 665440; 67023029; 6707044; 677298; 68657; 69036179; 70022216; 70028915; 70028923; 70057990; 7034300; 710424; 7110035; 7154093; 7157705; 718801; 723605; 7237946; 7312822; 7332716; 7336823; 734803; 7544944; 7606484; 7634157; 7667198; 7809258; 7826736; 8018649; 8153971; 8212210; 8289372; 8340414; 8354639; 8384783; 8520970; 8565547; 8595689; 8599262; 8654239; 8680468; 8803093; 8823803; 8853631; 8933403; 9171361; 9191583; 9279728; 9280812; 9338352; 9423940; 9471970; 9595087; D549758.

## 1.8 EULA Terms



- You have acquired a device ("INFRARED CAMERA") that includes software licensed by FLIR Systems AB from Microsoft Licensing, GP or its affiliates ("MS"). Those installed software products of MS origin, as well as associated media, printed materials, and "online" or electronic documentation ("SOFTWARE") are protected by international intellectual property laws and treaties. The SOFTWARE is licensed, not sold. All rights reserved.
- IF YOU DO NOT AGREE TO THIS END USER LICENSE AGREEMENT ("EULA"), DO NOT USE THE DEVICE OR COPY THE SOFTWARE. INSTEAD, PROMPTLY CONTACT FLIR Systems AB FOR INSTRUCTIONS ON RETURN OF THE UNUSED DEVICE(S) FOR A REFUND. **ANY USE OF THE SOFTWARE, INCLUDING BUT NOT LIMITED TO USE ON THE DEVICE, WILL CONSTITUTE YOUR AGREEMENT TO THIS EULA (OR RATIFICATION OF ANY PREVIOUS CONSENT).**
- GRANT OF SOFTWARE LICENSE.** This EULA grants you the following license:
  - You may use the SOFTWARE only on the DEVICE.
  - NOT FAULT TOLERANT.** THE SOFTWARE IS NOT FAULT TOLERANT. FLIR Systems AB HAS INDEPENDENTLY DETERMINED HOW TO USE THE SOFTWARE IN THE DEVICE, AND MS HAS RELIED UPON FLIR Systems AB TO CONDUCT SUFFICIENT TESTING TO DETERMINE THAT THE SOFTWARE IS SUITABLE FOR SUCH USE.
  - NO WARRANTIES FOR THE SOFTWARE.** THE SOFTWARE is provided "AS IS" and with all faults. THE ENTIRE RISK AS TO SATISFACTORY QUALITY, PERFORMANCE, ACCURACY, AND EFFORT (INCLUDING LACK OF NEGLIGENCE) IS WITH YOU. ALSO, THERE IS NO WARRANTY AGAINST INTERFERENCE WITH YOUR ENJOYMENT OF THE SOFTWARE OR AGAINST INFRINGEMENT. **IF YOU HAVE RECEIVED ANY WARRANTIES REGARDING THE DEVICE OR THE SOFTWARE, THOSE WARRANTIES DO NOT ORIGINATE FROM, AND ARE NOT BINDING ON, MS.**
  - No Liability for Certain Damages. **EXCEPT AS PROHIBITED BY LAW, MS SHALL HAVE NO LIABILITY FOR ANY INDIRECT, SPECIAL, CONSEQUENTIAL OR INCIDENTAL DAMAGES ARISING FROM OR IN CONNECTION WITH THE USE OR PERFORMANCE OF THE SOFTWARE. THIS LIMITATION SHALL APPLY EVEN IF ANY REMEDY FAILS OF ITS ESSENTIAL PURPOSE. IN NO EVENT SHALL MS BE LIABLE FOR ANY AMOUNT IN EXCESS OF U.S. TWO HUNDRED FIFTY DOLLARS (U.S.\$250.00).**
  - Limitations on Reverse Engineering, Decompilation, and Disassembly.** You may not reverse engineer, decompile, or disassemble the SOFTWARE, except and only to the extent that such activity is expressly permitted by applicable law notwithstanding this limitation.
  - SOFTWARE TRANSFER ALLOWED BUT WITH RESTRICTIONS.** You may permanently transfer rights under this EULA only as part of a permanent sale or transfer of the Device, and only if the recipient agrees to this EULA. If the SOFTWARE is an upgrade, any transfer must also include all prior versions of the SOFTWARE.
  - EXPORT RESTRICTIONS.** You acknowledge that SOFTWARE is subject to U.S. export jurisdiction. You agree to comply with all applicable international and national laws that apply to the SOFTWARE, including the U.S. Export Administration Regulations, as well as end-user, end-use and destination restrictions issued by U.S. and other governments. For additional information see <http://www.microsoft.com/exporting/>.

## 1.9 EULA Terms

Qt4 Core and Qt4 GUI, Copyright ©2013 Nokia Corporation and FLIR Systems AB. This Qt library is a free software; you can redistribute it and/or modify it under the terms of the GNU Lesser General Public License as published by the Free Software Foundation; either version 2.1 of the License, or (at your option) any later version. This library is distributed in the hope that it will be useful, but WITHOUT ANY WARRANTY; without even the implied warranty of MERCHANTABILITY or FITNESS FOR A PARTICULAR PURPOSE. See the GNU Lesser General Public License, <http://www.gnu.org/licenses/lgpl-2.1.html>. The source code for the libraries Qt4 Core and Qt4 GUI may be requested from FLIR Systems AB.

## Safety information

---

 <b>CAUTION</b>
The FLIR ONEcamera is not waterproof.
 <b>CAUTION</b>
Be careful if you use the camera to observe very hot objects such as fire and molten metal.

## 3.1 User-to-user forums

Exchange ideas, problems, and infrared solutions with fellow thermographers around the world in our user-to-user forums. To go to the forums, visit:

<http://forum.infraredtraining.com/>

## 3.2 Disposal of electronic waste

Electrical and electronic equipment (EEE) contains materials, components and substances that may be hazardous and present a risk to human health and the environment when waste electrical and electronic equipment (WEEE) is not handled correctly.

Equipment marked with the below crossed-out wheeled bin is electrical and electronic equipment. The crossed-out wheeled bin symbol indicates that waste electrical and electronic equipment should not be discarded together with unseparated household waste, but must be collected separately.

For this purpose all local authorities have established collection schemes under which residents can dispose waste electrical and electronic equipment at a recycling centre or other collection points, or WEEE will be collected directly from households. More detailed information is available from the technical administration of the relevant local authority.



## 3.3 Training

To read about infrared training, visit:

- <http://www.infraredtraining.com>
- <http://www.irtraining.com>
- <http://www.irtraining.eu>

## 3.4 Documentation updates

Our manuals are updated several times per year, and we also issue product-critical notifications of changes on a regular basis.

To access the latest manuals, translations of manuals, and notifications, go to the Download tab at:

<http://support.flir.com>

It only takes a few minutes to register online. In the download area you will also find the latest releases of manuals for our other products, as well as manuals for our historical and obsolete products.

## 3.5 Important note about this manual

FLIR Systems issues generic manuals that cover several cameras within a model line.

This means that this manual may contain descriptions and explanations that do not apply to your particular camera model.

### **3.6 Note about authoritative versions**

The authoritative version of this publication is English. In the event of divergences due to translation errors, the English text has precedence.

Any late changes are first implemented in English.

**FLIR Thermography and Instruments Customer Support Center**

Get support for thermography, fire fighting and instruments products

Welcome to the FLIR Instruments Customer Support Center. This portal will help you to get the most out of your FLIR Instruments products. The portal gives you access to:

- Instruments Knowledgebase
- Ask our support team (requires registration)
- Software and documentation (requires registration)
- Instruments service contacts

**Find Answers**  
Search in our FAQ to find answers.

Search by Keyword

[Search All Answers](#)

[See All Popular Answers](#)

**Click this link to find a manual for a current product.**  
To find a datasheet for a current product, click on a picture.  
To find a datasheet for a legacy product, click here.

					<a href="#">More...</a>

Important legal disclaimer, dangers, warnings, and cautions

**Register Your Products**  
You will gain access to special discounts and offers, downloads, and software upgrades.  
[Register for free today](#)

**FLIR Benefits Program**  
FLIR has decided to offer existing customers holding a valid license for certain software a free upgrade.  
[Enter Now](#)

**Infrared Training Center**  
Your premier educational and training resource for infrared camera use.  
[Get training](#)  
E-learning (English)  
Get training in Europe, Middle East and Africa  
E-learning (multiple languages)

## 4.1 General

For customer help, visit:

<http://support.flir.com>

## 4.2 Submitting a question

To submit a question to the customer help team, you must be a registered user. It only takes a few minutes to register online. If you only want to search the knowledgebase for existing questions and answers, you do not need to be a registered user.

When you want to submit a question, make sure that you have the following information to hand:

- The camera model
- The camera serial number
- The communication protocol, or method, between the camera and your device (for example, SD card reader, HDMI, Ethernet, USB, or FireWire)
- Device type (PC/Mac/iPhone/iPad/Android device, etc.)
- Version of any programs from FLIR Systems
- Full name, publication number, and revision number of the manual

## 4.3 Downloads

On the customer help site you can also download the following, when applicable for the product:



- Firmware updates for your infrared camera.
- Program updates for your PC/Mac software.
- Freeware and evaluation versions of PC/Mac software.
- User documentation for current, obsolete, and historical products.
- Mechanical drawings (in \*.dxf and \*.pdf format).
- Cad data models (in \*.stp format).
- Application stories.
- Technical datasheets.
- Product catalogs.

## 5.1 Procedure

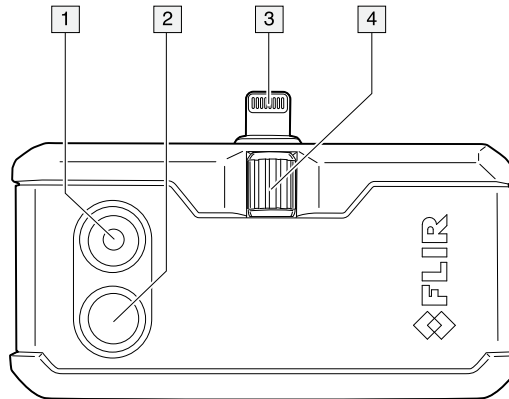
Follow this procedure:

1. Charge the FLIR ONE camera for approximately 1 hour.
2. Download and install the FLIR ONE app on your phone. The app is available on the Apple App Store and Google Play Store.
3. Push the On/off button on the bottom of the FLIR ONE camera to turn it on. The indicator will flash green when the FLIR ONE camera is ready.
4. Connect the FLIR ONE camera to your phone. If needed, adjust the blue dial of the OneFit and extend the connector to the appropriate length to fit your phone's protective case.
5. Start the FLIR ONE app on your phone. You will be asked to create a user account with your e-mail address and a password.
6. At the bottom of the screen and on the black bar, swipe to select Photo mode.
7. At the bottom of the screen, tap the round white button to take a snapshot. The image is saved to the Gallery.
8. The camera automatically goes into sleep mode after 2 minutes of inactivity.
9. Push and hold the On/off button for more than 2 seconds to turn off the FLIR ONE camera.

# Description

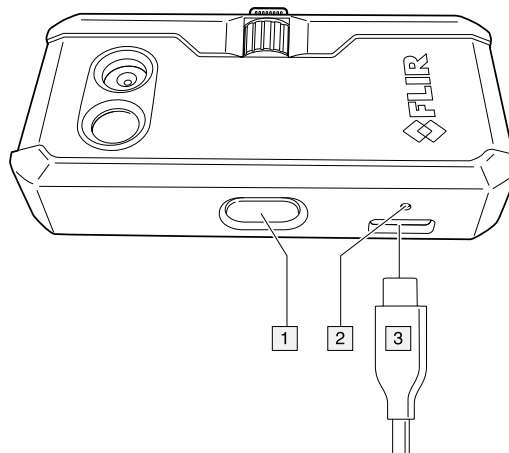
---

## 6.1 View from the front



1. Visual camera.
2. Thermal camera.
3. Phone connect.
4. OneFit height control.

## 6.2 View from the bottom



1. On/off switch and Power indicator.
2. Charge indicator LED.
3. USB-C power connector.

## 6.3 The FLIR ONE App

### 6.3.1 Installation

The latest version of the FLIR ONE app is available on the Apple App Store for iOS devices and the Google Play Store for Android devices. Download and install the app on your device.

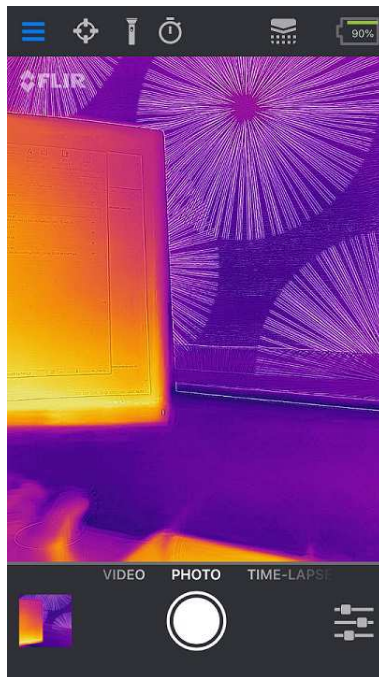
### 6.3.2 The FLIR Cloud account

The first time you start the FLIR ONE app, you will be asked to create a user account with your e-mail address and a password. A wizard will start that guides you through the registration.

The account can also be created at a later stage through the Control Panel. Follow this procedure:

1. In the top bar, tap the Control Panel icon.
2. Tap *Create your FLIR Cloud account*.
3. Type the information needed for the account, and then tap *CREATE*.
4. Follow the displayed instructions, and then tap *SIGN IN*.
5. Tap *FINISH*.

### 6.3.3 Bars and views



- **Top bar**  
At the top of the screen there is a black bar with icons for the Control Panel (slide-out menu), Spot Meter, Torch, Self-timer, and Calibration, and a battery indicator for the FLIR ONE camera.
- **Live image view**  
In the center of the screen the Live image view is shown. Depending on the Imaging Control settings, the presented image is either from the visual camera or the infrared camera, or is a combination of them both, a so-called MSX image.
- **Bottom bar**  
At the bottom of the screen there is a black bar with icons for the FLIR ONE Gallery, Image Mode (Photo, Video, or Time-Lapse), and Imaging Control.

### 6.3.4 Imaging Control

The following settings are available in the Imaging Control:

- Visible / MSX / Thermal (the current mode of the Live image view)
- Palettes
- MSX Distance
- Temperature Range
- IR Scale
- Lock Span
- Selfie Mode

Click a setting in the list to see more information.

## 7.1 Charging the battery



### WARNING

Make sure that you install the socket-outlet near the equipment and that it is easy to get access to.

Follow this procedure:

- Connect a power supply to a wall outlet.
- Connect the power supply to the USB-C connector power on the FLIR ONE camera.
- Let the battery charge for approximately 1 hour.
- Do not use the FLIR ONE camera when the battery is charging.

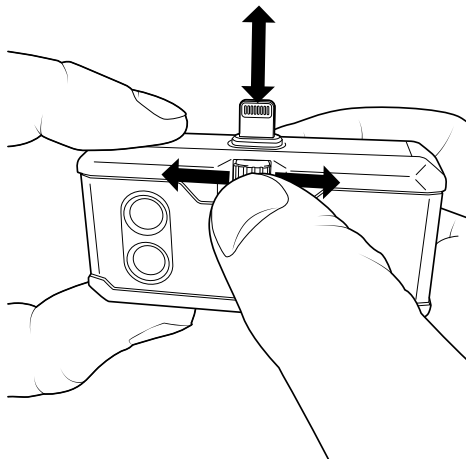
## 7.2 Turning the FLIR ONE camera on and off

- Push the On/off button on the bottom of the FLIR ONE camera to turn it on. The indicator will flash green when the FLIR ONE camera is ready.
- The camera automatically goes into sleep mode after 2 minutes of inactivity.
- Push and hold the On/off button for more than 2 seconds to turn off the FLIR ONE camera.

## 7.3 Connecting the FLIR ONE camera to your phone

Download and install the FLIR ONE app on your phone, and then start it.

Turn on the FLIR ONE camera and connect it to your phone. If needed, adjust the blue dial of the OneFit and extend the connector to the appropriate length to fit your phone's protective case.



If the FLIR ONE camera is turned off when you connect it to your phone, the app will prompt you to attach your FLIR ONE camera before you can view the camera features.

## 7.4 Saving an image

### 7.4.1 General

The images are saved to the FLIR ONE Gallery. To also have the images saved to the photo gallery of your phone, go to Settings in the Control Panel.

It is not necessary to have the FLIR ONE camera attached to the phone to view saved images.

#### **7.4.2 Procedure**

Follow this procedure:

1. In the bottom bar, swipe to select Photo mode.
2. To save an image, tap the white button.
3. To view the most recent saved image, tap the thumbnail image in the bottom bar to access the FLIR ONE Gallery.
4. When viewing an image, swipe up or down on the image to reveal the underlying image from the visible camera.

## **7.5 Recording a video**

### **7.5.1 General**

The videos are saved to the FLIR ONE Gallery.

### **7.5.2 Procedure**

Follow this procedure:

1. In the bottom bar, swipe to select Video mode.
2. To begin a video recording, tap the red button.
3. To stop and save the video recording, tap the red button again.
4. To view the recorded video, tap the thumbnail image in the bottom bar to access the FLIR ONE Gallery.

## **7.6 Recording a time-lapse video**

### **7.6.1 General**

Use the Time-Lapse mode to save images according to a specified time interval. The images are then combined into a video that is saved to the FLIR ONE Gallery.

### **7.6.2 Procedure**

Follow this procedure:

1. In the bottom bar, swipe to select Time-Lapse mode.
2. To display the time-lapse options, tap the red button and then adjust the options as needed.
3. To begin a video recording, tap the red button.
4. To stop and save the video recording, tap the red button again.
5. To view the recorded video, tap the thumbnail image in the bottom bar to access the FLIR ONE Gallery.

## **7.7 My Gallery**

### **7.7.1 General**

To view and edit captured images and recorded videos, tap the thumbnail image in the bottom bar to access the FLIR ONE Gallery. Images and videos may be shared through text messaging or e-mail, and may be edited by changing the color palette or the temperature scale. While an image is being viewed, it is possible to swipe up or down to reveal the visible image that is used for MSX blending.

## 7.8 Palettes

### 7.8.1 General

The FLIR ONE app allows a choice from nine different palettes, including color, gray-scale, or a combination of both.

### 7.8.2 Change settings

Follow this procedure:

1. In the bottom bar, tap the Imaging Control.
2. Tap the Palettes icon.
3. Select one of the available color palettes.

## 7.9 MSX Distance

### 7.9.1 General

The FLIR ONE camera is tuned to align thermal and visual images for an object distance of 3 m. For images taken at a shorter distance, use the MSX Distance control slider to adjust the alignment.

### 7.9.2 Change settings

Follow this procedure:

1. In the bottom bar, tap the Imaging Control.
2. Tap the MSX Distance icon.
3. Use the slider bar to adjust the outlines of the visual image until they are aligned with the edges of the thermal image.
4. To exit, tap the MSX Distance icon again.

## 7.10 Temperature Range

### 7.10.1 General

All of the cameras in the FLIR ONE series can measure temperatures between  $-20^{\circ}\text{C}$  and  $+120^{\circ}\text{C}$  ( $-4$  to  $+248^{\circ}\text{F}$ ).

The FLIR ONE PRO camera has an extended temperature range, and can measure up to  $+400^{\circ}\text{C}$  ( $+752^{\circ}\text{F}$ ). High temperature is the standard mode.

### 7.10.2 Change settings

Follow this procedure:

1. In the bottom bar, tap the Imaging Control.
2. Tap the Temperature Range mode icon.
3. Select the Low temperature option, and then use the spot meters as you would in the standard mode.

## 7.11 IR Scale

### 7.11.1 General

The FLIR ONE camera will show you the temperature range of the current scene, and will readjust the range automatically when the scene changes. By using the feature IR Scale, it is possible to manually set the temperature range and consequently permit adjustment of the color mapping.

### 7.11.2 Change settings

Follow this procedure:

1. In the bottom bar, tap the Imaging Control.
2. Tap the IR Scale icon. The scale will appear on the left side of the screen, with the high and low temperatures labeled.
3. To adjust the color mapping, press and hold the bar and slide it up or down. You can also tap the measurements and then manually type in your selected limits.

## 7.12 Lock Span

### 7.12.1 General

The Lock Span function locks the temperature range of colors in the display to the scene you are currently looking at. This can be useful when you, for example, want to compare the temperature of two objects: lock the span when looking at one of the objects, and then move the focus to the other object to see any differences in color.

### 7.12.2 Change settings

Follow this procedure:

1. In the bottom bar, tap the Imaging Control.
2. To hold the temperature range of the scene, tap the Lock Span icon.
3. To return to auto-scaling of the scene, tap the Lock Span icon again.

## 7.13 Selfie Mode

It is possible to use the FLIR ONE camera in Selfie Mode.

### 7.13.1 Change settings

Follow this procedure:

1. In the bottom bar, tap the Imaging Control.
2. Tap the Selfie Mode icon.
3. On the phone, change the position of the FLIR ONE camera so that it is facing you.

## 7.14 Measuring

### 7.14.1 General

You can place a spot or an area on the screen that measures the surface temperature of any object in the scene. Up to three spots, three rectangles, and three circles can be used at the same time in the Live image view.

The accuracy depends on many factors, including the distance from the object, the ambient temperature, and the emissivity of the material being observed. Users are encouraged to learn more about the science of thermography from [www.infraredtraining.com](http://www.infraredtraining.com).

### 7.14.2 Add a spot meter or an area of interest

Follow this procedure:

1. In the top bar, tap the Spot Meter icon. A list of Spots, Rectangles, and Circles appears.
2. Tap the plus sign.
3. In the Live image view:
  - Tap and hold the spot or area to move it around the screen.
  - Pinch to adjust the size of the areas.



## 7.15 Torch

### 7.15.1 General

FLIR MSX is a patented technology that makes use of the visible camera in the FLIR ONE to maximize detail and image sharpness. This feature requires some visible light, so in dark environments turn on your phone's flashlight to enhance the image details. This feature makes use of the light that is built into the phone.

### 7.15.2 Use the torch

Follow this procedure:

1. To turn on the flashlight of the phone, tap the Torch icon in the top bar.
2. To turn off the flashlight of the phone, tap the Torch icon once again.

## 7.16 Self-timer

### 7.16.1 General

The Self-timer option allows the user to set a time delay before an image is saved.

### 7.16.2 Use the self-timer

Follow this procedure:

1. To enable the time delay option, tap the Self-timer icon in the top bar.
2. Tap again to select the desired time delay.
3. To save an image, tap the white button in the bottom bar. A timer displays the count-down on the screen.
4. To turn off the time delay option, tap the Self-timer icon once again.

## 7.17 Automatic calibration

### 7.17.1 General

The FLIR ONE camera has a mechanical shutter inside that periodically activates and allows the thermal camera to do a calibration or image refresh. When the shutter activates, the image will freeze for a brief period. When the camera first turns on, and periodically thereafter, the FLIR ONE app will perform an automatic calibration to provide an optimal image. It is also possible to manually activate the shutter by tapping the Calibration icon in the top bar.

To turn off automatic calibration and switch to manual calibration, go to Settings in the Control Panel.

## 7.18 Settings

The Settings menu allows the user to configure additional features on the FLIR ONE camera, as described below. These configurations are stored under FLIR ONE in the settings of the phone.

To open the Settings, tap the Control Panel icon and then tap Settings.

### 7.18.1 Location

If a mobile phone signal is available, the geographic location will be saved and added to captured images. This makes it possible to see images on a map.

### 7.18.2 Photos

Turn this on to save a copy of your images and videos in the photo gallery of the phone. Images will always be stored in the FLIR ONE camera regardless of this setting. Items already captured will not be copied.

### 7.18.3 Automatic Calibration

Use this setting to turn off (or turn on) automatic calibration and switch to manual calibration instead.

### 7.18.4 Temperature Unit

Use this setting to change the unit of the temperature scale between Celsius and the Fahrenheit.

### 7.18.5 Emissivity

When the Spot Meter is enabled, the temperature displayed is affected by many factors, including a property of the target material known as emissivity. This property is a relative rating of how well a material emits or radiates thermal energy. Some materials are more emissive than others: glossy or reflective materials such as metals tend to be poor emitters. For most materials, the default “matte” setting is a fair approximation.

## 7.19 Help

More information about the FLIR ONE camera is available through the Help section and the Tips and Tricks content in the FLIR ONE app.

## 7.20 About

The About menu option provides information about the FLIR ONE camera, the FLIR ONE app, our company FLIR Systems, Inc., and additional legal, licensing, and regulatory information.

## 8.1 Camera housing, cables, and other items

### 8.1.1 Liquids

Use one of these liquids:

- Warm water
- A weak detergent solution


### 8.1.2 Equipment

A soft cloth

### 8.1.3 Procedure

Follow this procedure:

1. Soak the cloth in the liquid.
2. Twist the cloth to remove excess liquid.
3. Clean the part with the cloth.

	<b>CAUTION</b>
Do not apply solvents or similar liquids to the camera, the cables, or other items. This can cause damage.	

## 8.2 Infrared lens


### 8.2.1 Liquids

Use one of these liquids:

- A commercial lens cleaning liquid with more than 30% isopropyl alcohol.
- 96% ethyl alcohol (C<sub>2</sub>H<sub>5</sub>OH).

### 8.2.2 Equipment


Cotton wool


	<b>CAUTION</b>
If you use a lens cleaning cloth it must be dry. Do not use a lens cleaning cloth with the liquids that are given in section 8.2.1 above. These liquids can cause material on the lens cleaning cloth to become loose. This material can have an unwanted effect on the surface of the lens.	

### 8.2.3 Procedure

Follow this procedure:

1. Soak the cotton wool in the liquid.
2. Twist the cotton wool to remove excess liquid.
3. Clean the lens one time only and discard the cotton wool.

	<b>WARNING</b>
Make sure that you read all applicable MSDS (Material Safety Data Sheets) and warning labels on containers before you use a liquid: the liquids can be dangerous.	

	<b>CAUTION</b>
<ul style="list-style-type: none"> <li>• Be careful when you clean the infrared lens. The lens has a delicate anti-reflective coating.</li> <li>• Do not clean the infrared lens too vigorously. This can damage the anti-reflective coating.</li> </ul>	

[See next page]



The World's Sixth Sense™

March 22, 2018 Täby, Sweden

AQ320287

### CE Declaration of Conformity – EU Declaration of Conformity

Product: FLIR One -series

Name and address of the manufacturer:

FLIR Systems AB

PO Box 7376

SE-187 15 Täby, Sweden

This declaration of conformity is issued under the sole responsibility of the manufacturer.

The object of the declaration: FLIR One -series (FLIR part numbers 435-00xx-xx)

The object of the declaration described above is in conformity with the relevant Union harmonisation legislation:

#### Directives:

Directive:	2011/65/EU	RoHS
Directive	2014/30/EU	Electromagnetic Compability

#### Standards:

Emission:	EN 61000-3-2:2014	EMC Limits for harmonic current emissions
	EN 61000-3-3:2013	EMC Limitation of voltage changes
	EN 55032:2012	EMC of multimedia equipment - Emission requirements
Immunity:	EN 55024:2010	Information Tech Equipment Immunity characteristics

**FLIR Systems AB**

Quality Assurance

Lea Dabiri

Quality Manager





---

**Website**

<http://www.flir.com>

**Customer support**

<http://support.flir.com>

**Copyright**

© 2018, FLIR Systems, Inc. All rights reserved worldwide.

**Disclaimer**

Specifications subject to change without further notice. Models and accessories subject to regional market considerations. License procedures may apply. Products described herein may be subject to US Export Regulations. Please refer to [exportquestions@flir.com](mailto:exportquestions@flir.com) with any questions.

Publ. No.: T810375  
Release: AA  
Commit: 51295  
Head: 51295  
Language: en-US  
Modified: 2018-07-05  
Formatted: 2018-07-05